



Technical Information

3220-K

HMF - Z001517

Contents

Catalogue no.	Section
31 098	00
Date	Page
05-04-2013	1(1)

	Series	Rev.	Section
Technical Data	3220-K	07-01-2013	31 098 10
Lifting capacity diagram, K2	3220-K	14-08-2012	31 098 22
Lifting capacity diagram, K3	3220-K	14-08-2012	31 098 23
Lifting capacity diagram, K4	3220-K	14-08-2012	31 098 24
Lifting capacity diagram, K5	3220-K	14-08-2012	31 098 25
Lifting capacity diagram, K6	3220-K	14-08-2012	31 098 26
Lifting capacity diagram, K7	3220-K	14-08-2012	31 098 27
Lifting capacity diagram, K8	3220-K	14-08-2012	31 098 28
Lifting capacity, K2-K8	3220-K	17-04-2012	31 098 35
Dimension sketch K2-K6	3220-K	20-04-2012	31 098 40
Dimension sketch K7-K8	3220-K	20-04-2012	31 098 41
Slewing radius	3220-K	09-07-2012	31 098 42
Lifting height at column	3220-K	12-07-2012	31 098 45
Dimension sketch, stabilizer legs	3220-K	19-07-2012	31 098 50
Dimension sketch, stabilizer cylinder	3220-K	03-12-2012	31 098 51
Dimension sketch, tank	3220-K	21-07-2012	31 098 53
Technical data, winch	3220-K	02-10-2012	31 098 55
Dimension sketch winch, 2,5T	3220-K	10-04-2012	31 098 56
Dimension sketch, internal hose routing	3220-K	12-08-2012	31 098 59
Dimension sketch, TS-RC	3220-K	22-01-2013	31 098 61
Stowed in truck body	3220-K	16-07-2012	31 098 65
Centres of gravity	3220-K	22-11-2012	31 098 75
3220-K with Fly-jib			
Technical Data, 3220-K with Fly-jib	3220-K	26-10-2012	31 098 250
Lifting capacity diagram, 3220-K5 with FJ1000 K4	3220-K	24-09-2012	31 098 253
Lifting capacity diagram, 3220-K5 with FJ1000 K5	3220-K	27-09-2012	31 098 254
Lifting capacity diagram, 3220-K6 with FJ600 K3	3220-K	01-10-2012	31 098 255
Lifting capacity diagram, 3220-K6 with FJ600 K4	3220-K	02-10-2012	31 098 256
Dimension sketch, 3220-K5 with FJ1000	3220-K	09-10-2012	31 098 265
Dimension sketch, 3220-K6 with FJ600	3220-K	18-10-2012	31 098 266
Lifting capacity, Fly-jib with winch	3220-K	03-04-2013	31 098 275

Technical Information, 3220-K



Technical Data

Catalogue no.	Section
31 098	10
Date	Page
04-04-2013	1(2)

Performance		3220-K2	3220-K3	3220-K4	3220-K5	3220-K6	3220-K7	3220-K8
Loading group (EN12999)		H1/B3/HD5	H1/B3/HD5	H1/B3/HD5	H1/B3/HD5	H1/B3/HD5	H1/B3/HD5	H1/B3/HD5
Load moment	tm	30,7	29,8	29,5	28,7	27,9	27,8	27,1
Hydraulic reach	m	8,3	10,3	12,4	14,6	16,8	19	21,3
Hydraulic telescopic movement	mm	3680	5730	7810	9950	12150	14410	166700
Lifting capacity, hydraulic	kg-m	6830 - 4,5 4850 - 6,3 3720 - 8,2	6630 - 4,5 4660 - 6,3 3520 - 8,2 2820 - 10,2	6410 - 4,6 4460 - 6,4 3330 - 8,3 2620 - 10,3 2170 - 12,3	6230 - 4,6 4290 - 6,4 3170 - 8,3 2460 - 10,3 2000 - 12,4 1700 - 14,5	6070 - 4,6 4140 - 6,4 3010 - 8,3 2310 - 10,3 1850 - 12,4 1550 - 14,5 1330 - 16,7	5910 - 4,7 4000 - 6,5 2870 - 8,4 2170 - 10,3 1710 - 12,4 1400 - 14,5 1190 - 16,7 1040 - 18,9	5770 - 4,7 3860 - 6,5 2750 - 8,4 2040 - 10,4 1580 - 12,5 1270 - 14,6 1060 - 16,7 910 - 18,9 800 - 21,2
Lifting capacity, manual extensions*	kg-m					1100 - 18,9	900 - 21,2	680 - 23,4 450 - 25,8
Slewing torque, gross	kNm	38	38	38	38	38	38	38
Slewing angle	°	∞	∞	∞	∞	∞	∞	∞
Max. heel at max. load moment	°	5	5	5	5	5	5	5
Slewing speed	°/s	10	10	10	10	10	10	10

Dimensions

Height above chassis	mm	2350	2350	2350	2350	2350	2350	2350
Width	mm	2500	2500	2500	2500	2500	2500	2500
Length, no extra valves	mm	1024	1024	1024	1024	1024	1130	1130
Length, with extra valves (hose guides)	mm	1147	1147	1147	1147	1147		
Length, with 2 extra valves (hose reels)	mm						1283	1283
Length, with extra valves (int. hose routing)	mm	1024	1024	1024	1024	1024		
Stabilizer spread min., 2xS=1625	mm	5550	5550	550	5550	5550	5550	5550
Stabilizer spread max., 2xS=2065	mm	6430	6430	6430	6430	6430	6430	6430

Weights, basic loader

Standard loader 1), excl. stabilizers	kg	2590	2790	2990	3160	3320	3470	3595
Stabilizer beam, 1xS=1625	kg	135	135	135	135	135	135	135
Stabilizer beam, 1xS=2065	kg	180	180	180	180	180	180	180
Stabilizer cylinder, 1x swing-up	kg	50	50	50	50	50	50	50
Mounting kit - standard, 8 bolts	kg	70	70	70	70	70	70	70
Mounting kit, 4 bolts	kg	40	40	40	40	40	40	40
Manual extensions	kg					68	58	47
	kg							40
Oil in loader (stowing position)	kg	35	40	44	47	51	56	60
Tank 160L, excl. oil (fitted on loader)*	kg	75	75	75	75	75	75	75

1) Weights ± 5% because of tolerances for plate thickness



Datos técnicos

Catálogo n°	Sección
31 098	10
Fecha	Página
26-02-2013	2(2)

Weights, equipment

		3220-K2	3220-K3	3220-K4	3220-K5	3220-K6	3220-K7	3220-K8
1 extra valve, int. hose routing	kg	75	75	80	80	85		
2 extra valves, hose guides	kg	75	90	105	120	135		
2 extra valves, hose reels	kg						185	185
2 extra valves, int. hose routing	kg	130	130	140	145	150		
Winch (2.5 t), single snatch block	kg	180	180	180	185	185	185	190
Winch (2.5 t), double snatch block	kg	200	200	200	205	205	205	210
Extra proportional RC-function on the base	kg	12	12	12	12	12	12	12
Oil cooler	kg	30	30	30	30	30	30	30

Max. load on stabilizers (per stabilizer cylinder)

S=1650 (swing-up/ hydr. swing-up)	kN	130	130	130	130	130	130	130
S=2065 (swing-up/ hydr. swing-up)	kN	127	127	127	127	127	127	127

Power consumption / oil capacity

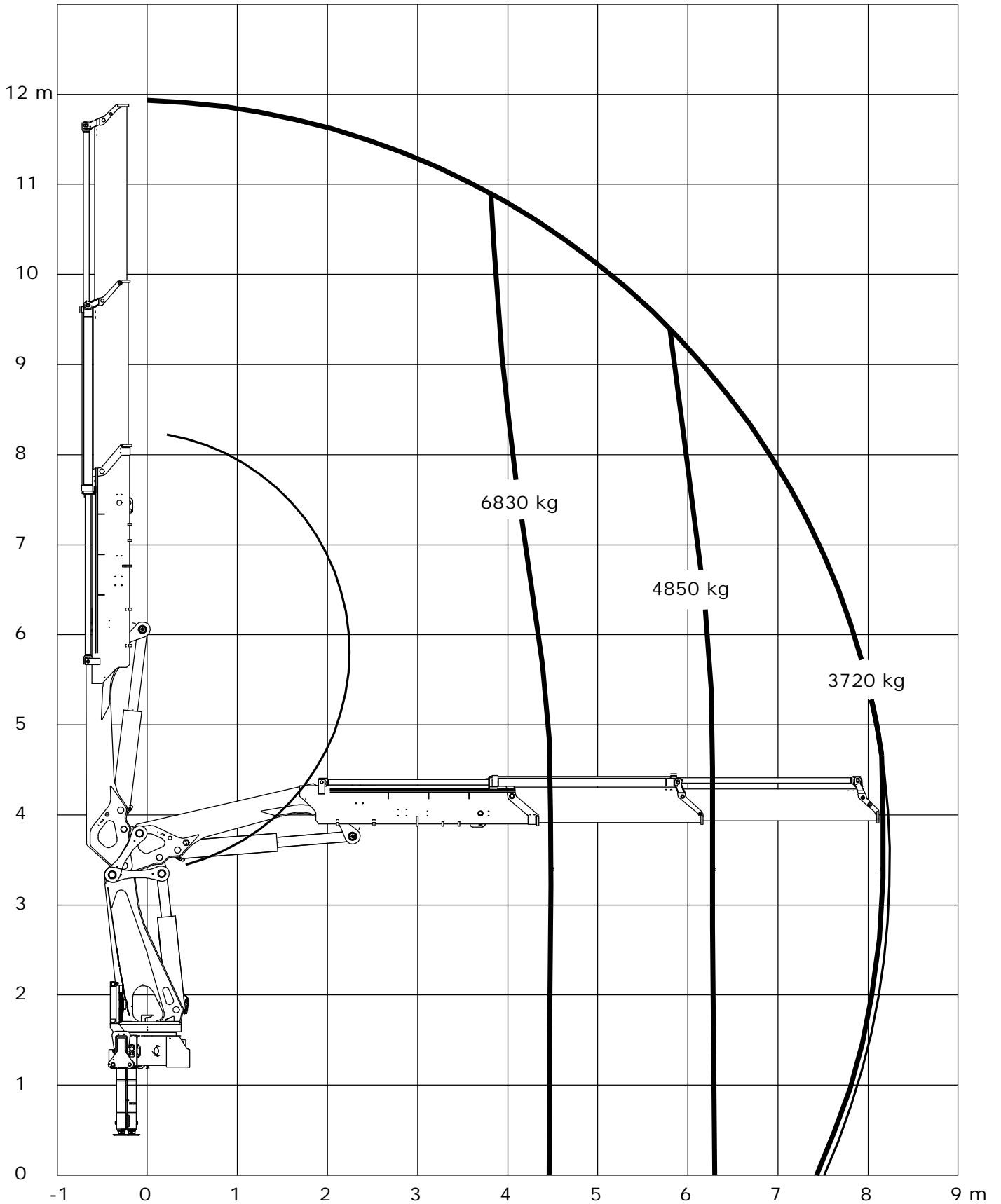
Working pressure	Bar	365	365	365	365	365	365	365
Max. pump performance, fixed flow	L/min	80	80	80	80	80	80	80
	KW	49	49	49	49	49	49	49
Max. pump performance, variable	L/min	130	130	130	130	130	130	130
	KW	80	80	80	80	80	80	80
Max. oil consumption	L	77	88	99	107	115	124	133

Technical Information 3220-K



Lifting capacity diagram, K2

Catalogue no.	Section
31 098	22
Date	Page
14-08-2012	1 (1)

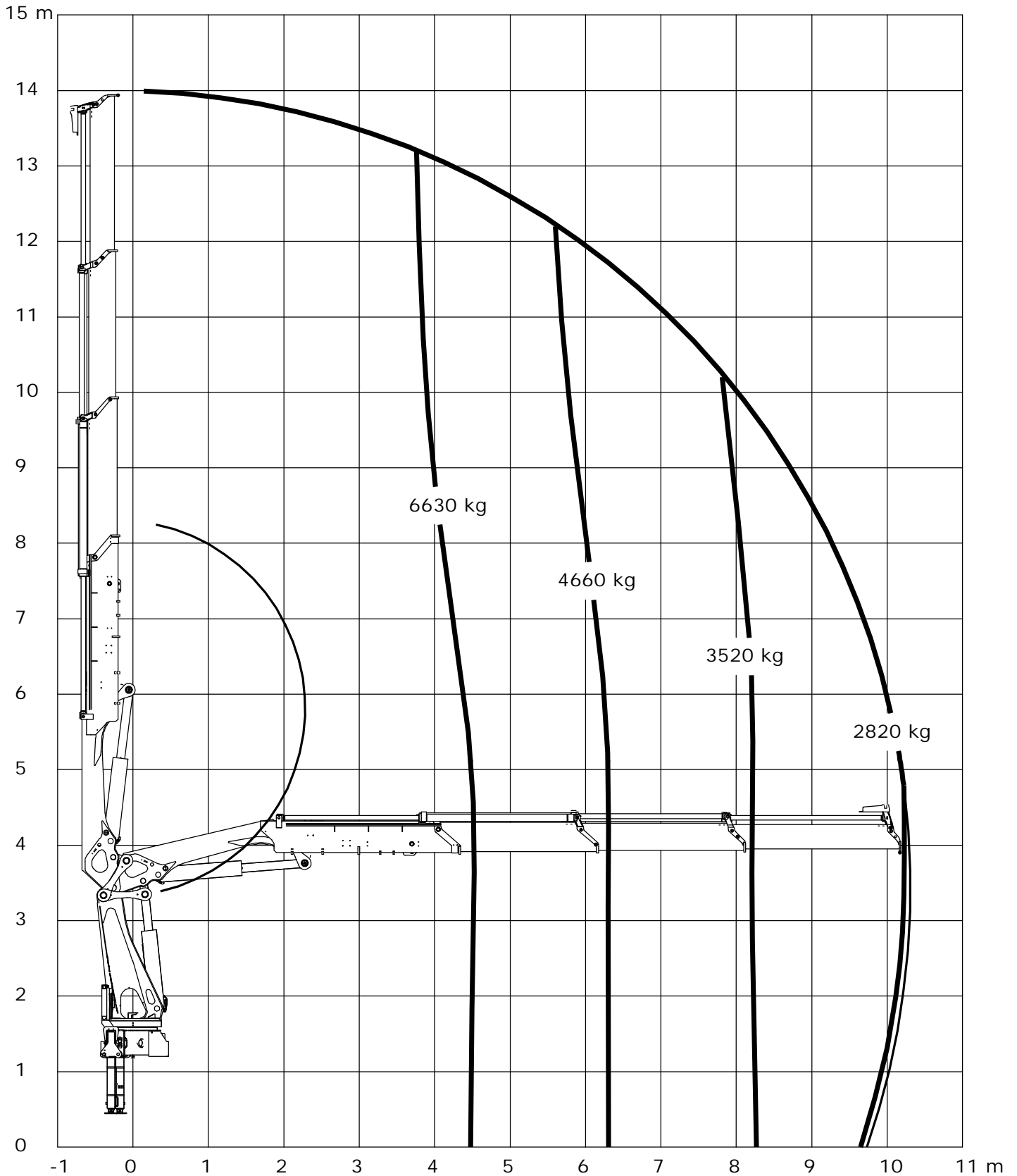


Loading group: EN12999 H1/B3



Lifting capacity diagram, K3

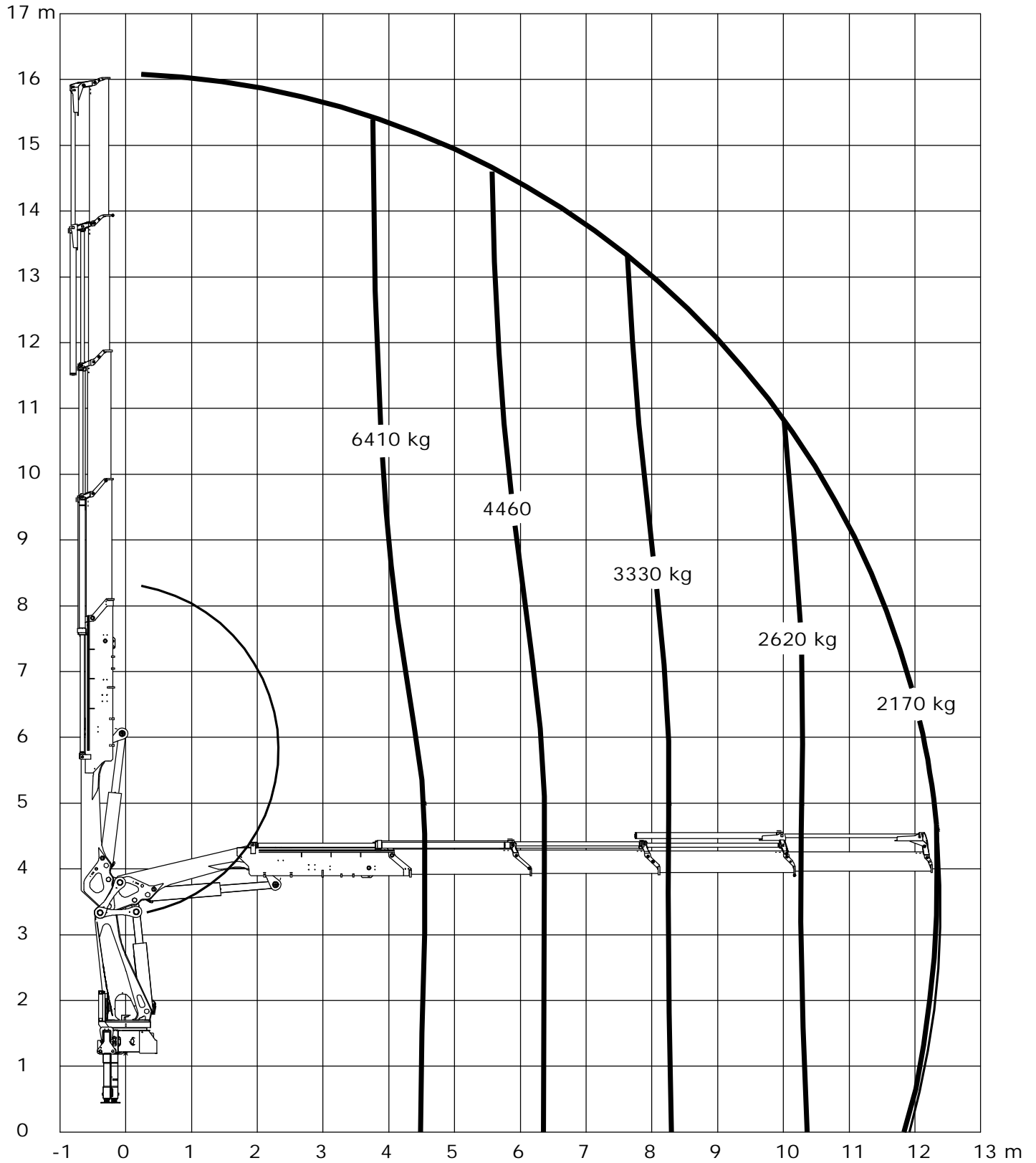
Catalogue no.	Section
31 098	23
Date	Page
14-08-2012	1 (1)



Loading group: EN12999 H1/B3

Lifting capacity diagram, K4

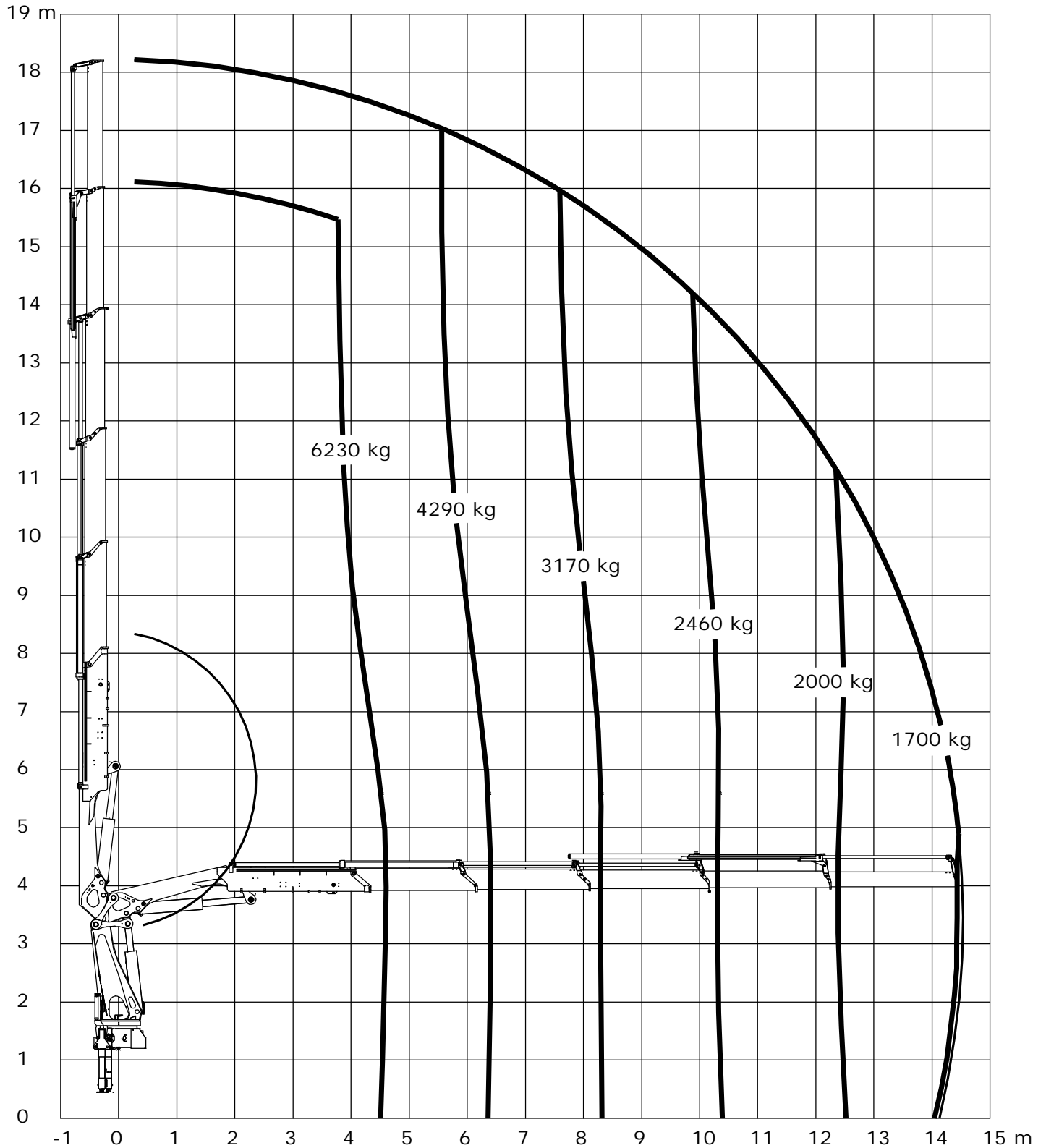
Catalogue no.	Section
31 098	24
Date	Page
14-08-2012	1 (1)



Loading group: EN12999 H1/B3

Lifting capacity diagram, K5

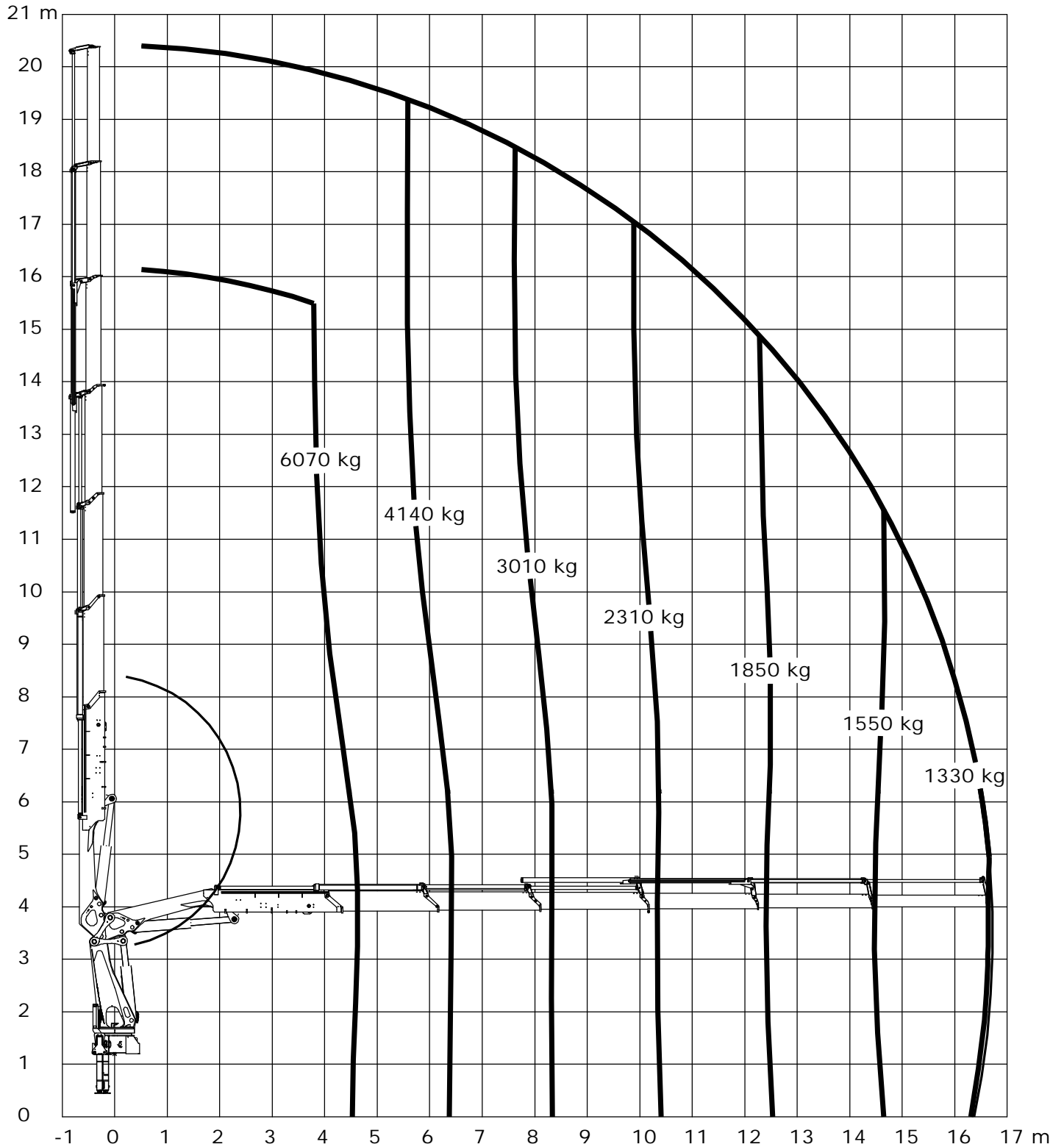
Catalogue no.	Section
31 098	25
Date	Page
14-08-2012	1 (1)



Loading group: EN12999 H1/B3

Lifting capacity diagram, K6

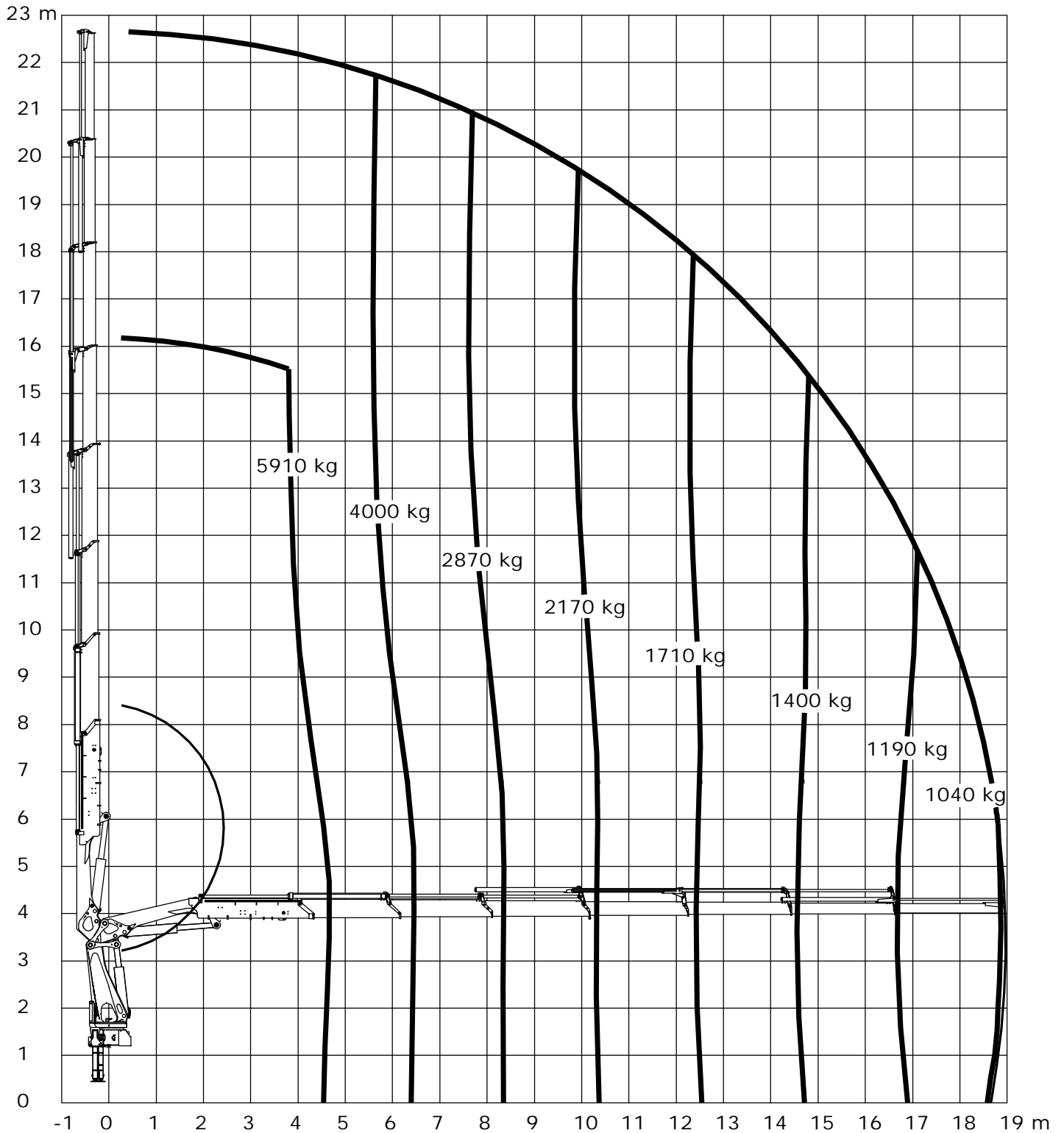
Catalogue no.	Section
31 098	26
Date	Page
14-08-2012	1 (1)



Loading group: EN12999 H1/B3

Lifting capacity diagram, K7

Catalogue no.	Section
31 098	27
Date	Page
14-08-2012	1 (1)

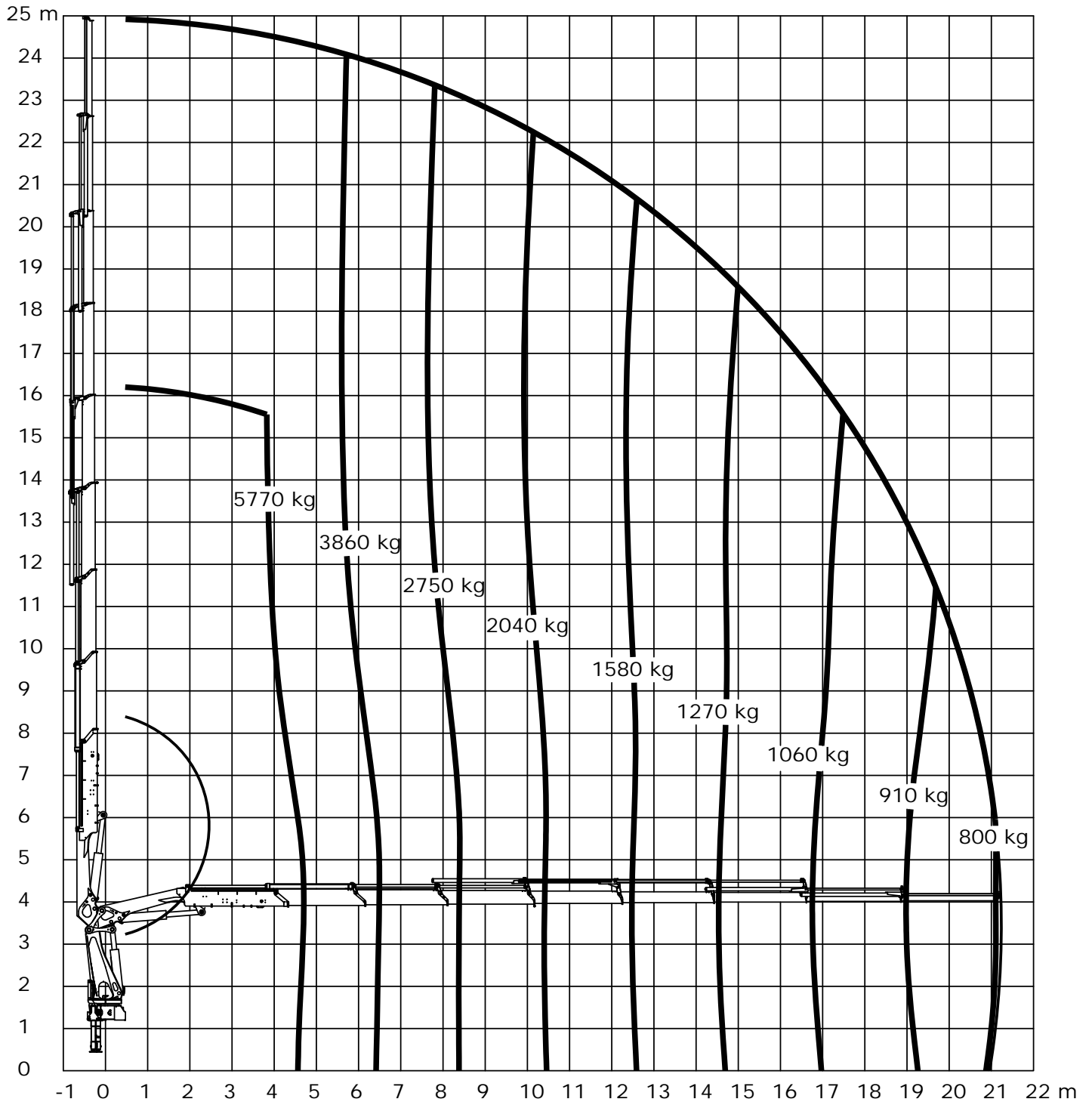


Loading group: EN12999 H1/B3



Lifting capacity diagram, K8

Catalogue no.	Section
31 098	28
Date	Page
14-08-2012	1 (1)



Loading group: EN12999 H1/B3



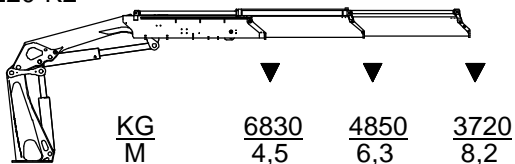
Technical Information 3220-K



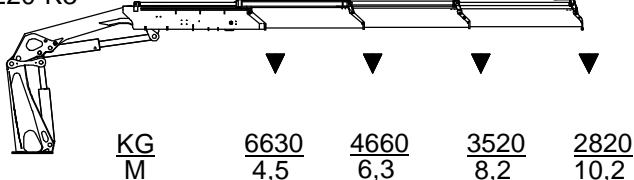
Lifting capacity, K2-K8

Catalogue no.	31 098	Section	35
Date	17-04-2012	Page	1 (1)

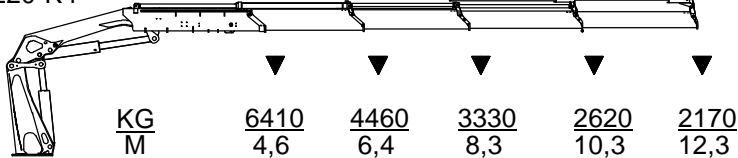
3220-K2



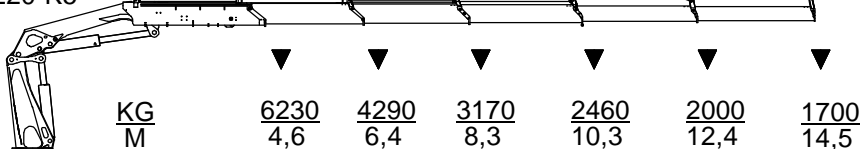
3220-K3



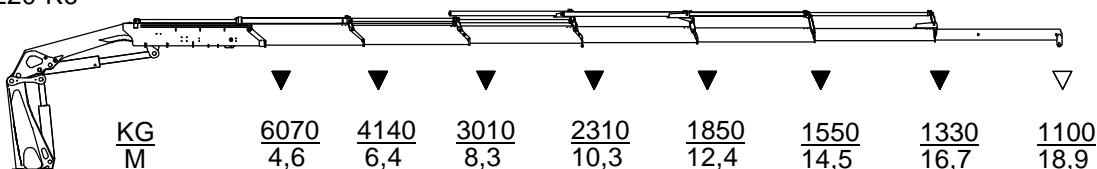
3220-K4



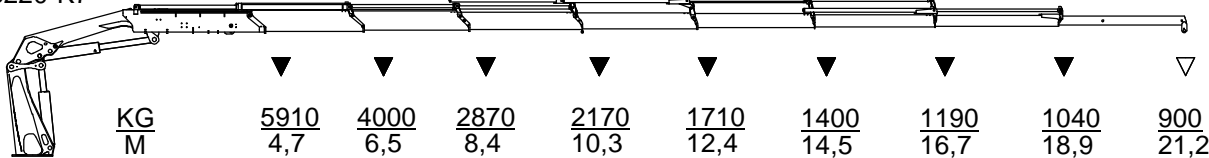
3220-K5



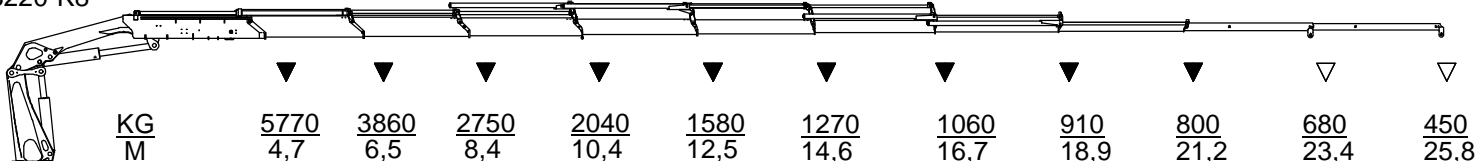
3220-K6



3220-K7



3220-K8



▽ Løfteevne med forlængerarme/Lifting capacity with man. extensions

▼ Løfteevne uden forlængerarme/Lifting capacity without man. extensions

- power to lift.

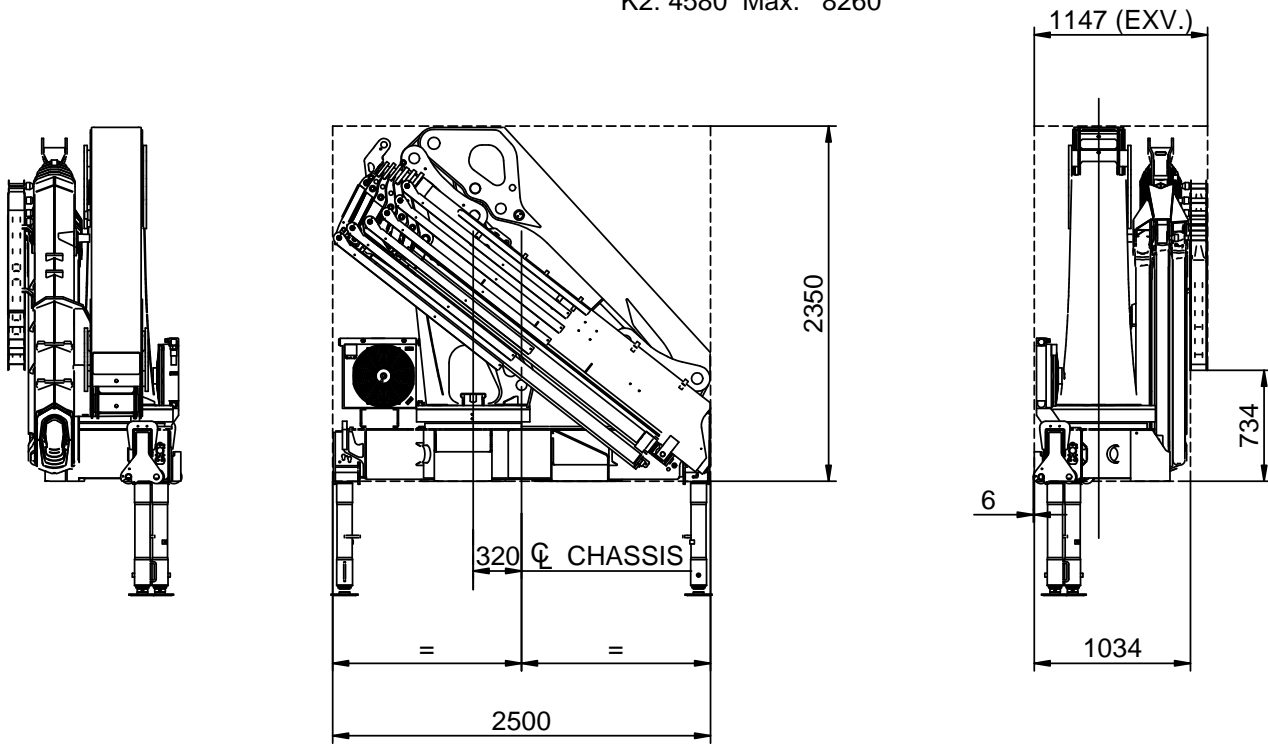
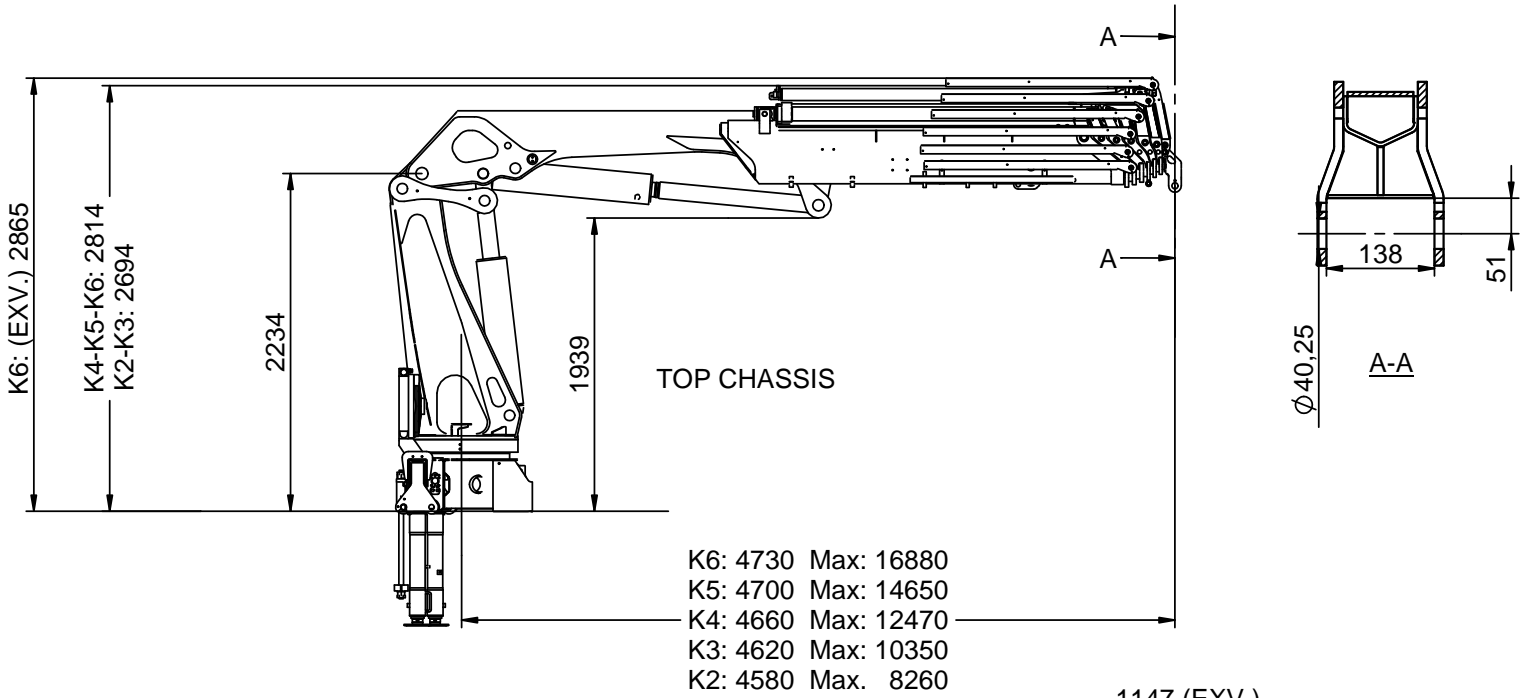


Technical Information 3220-K



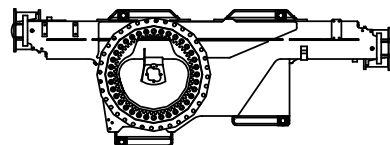
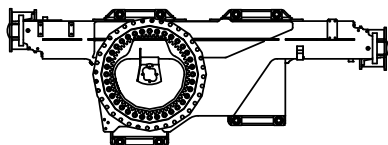
Dimension sketch K2-K6

Catalogue no.	Section
31 098	40
Date	Page
20-04-2012	1 (1)



8 stk M30x2

4 stk M36x2

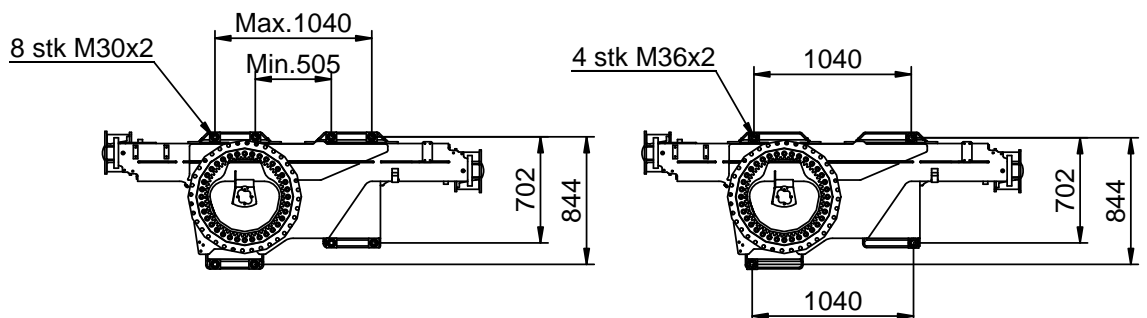
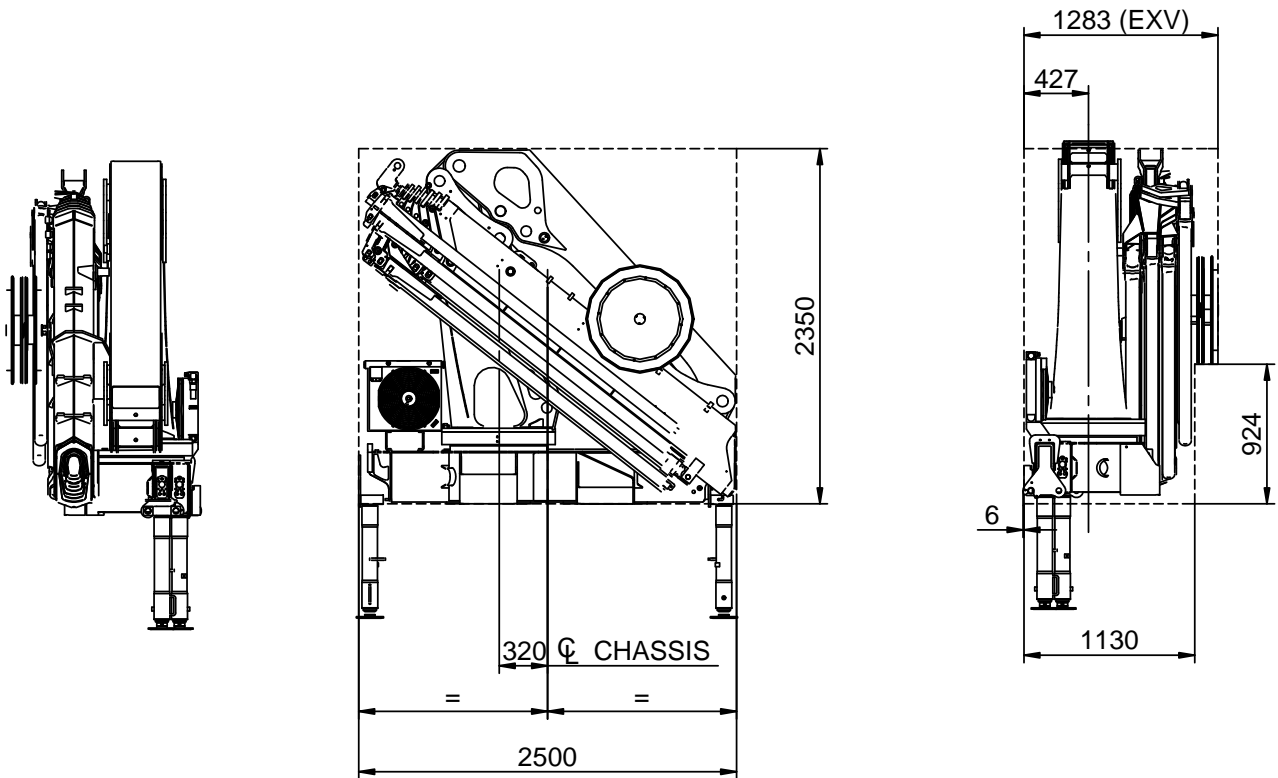
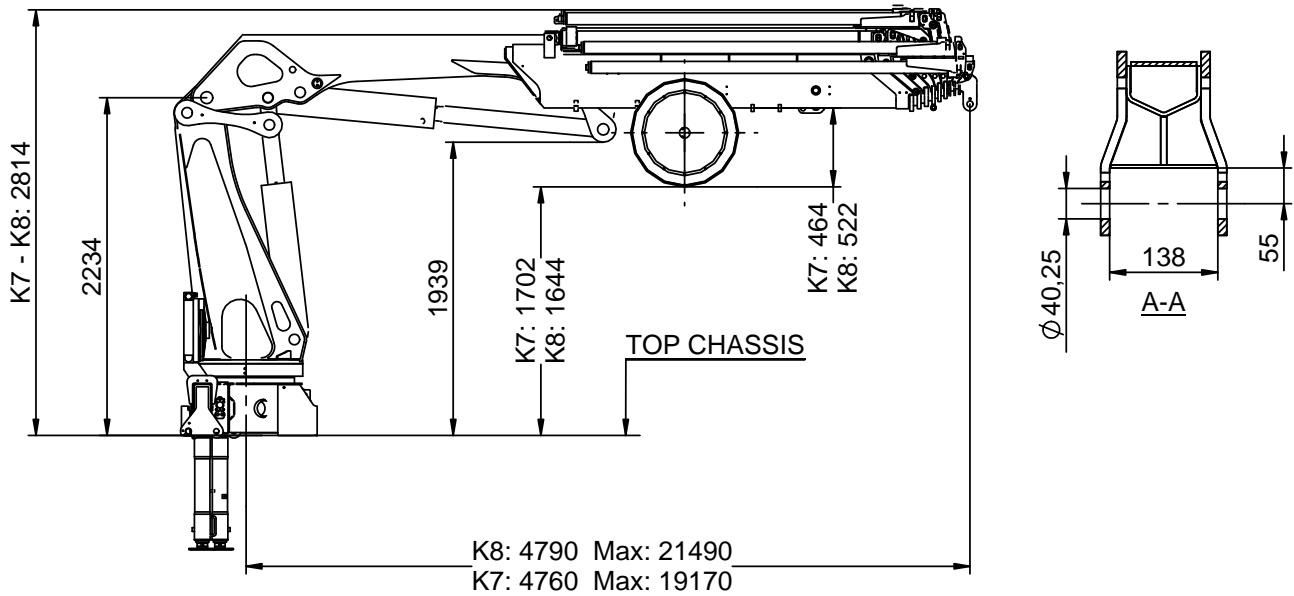


Technical Information 3220-K



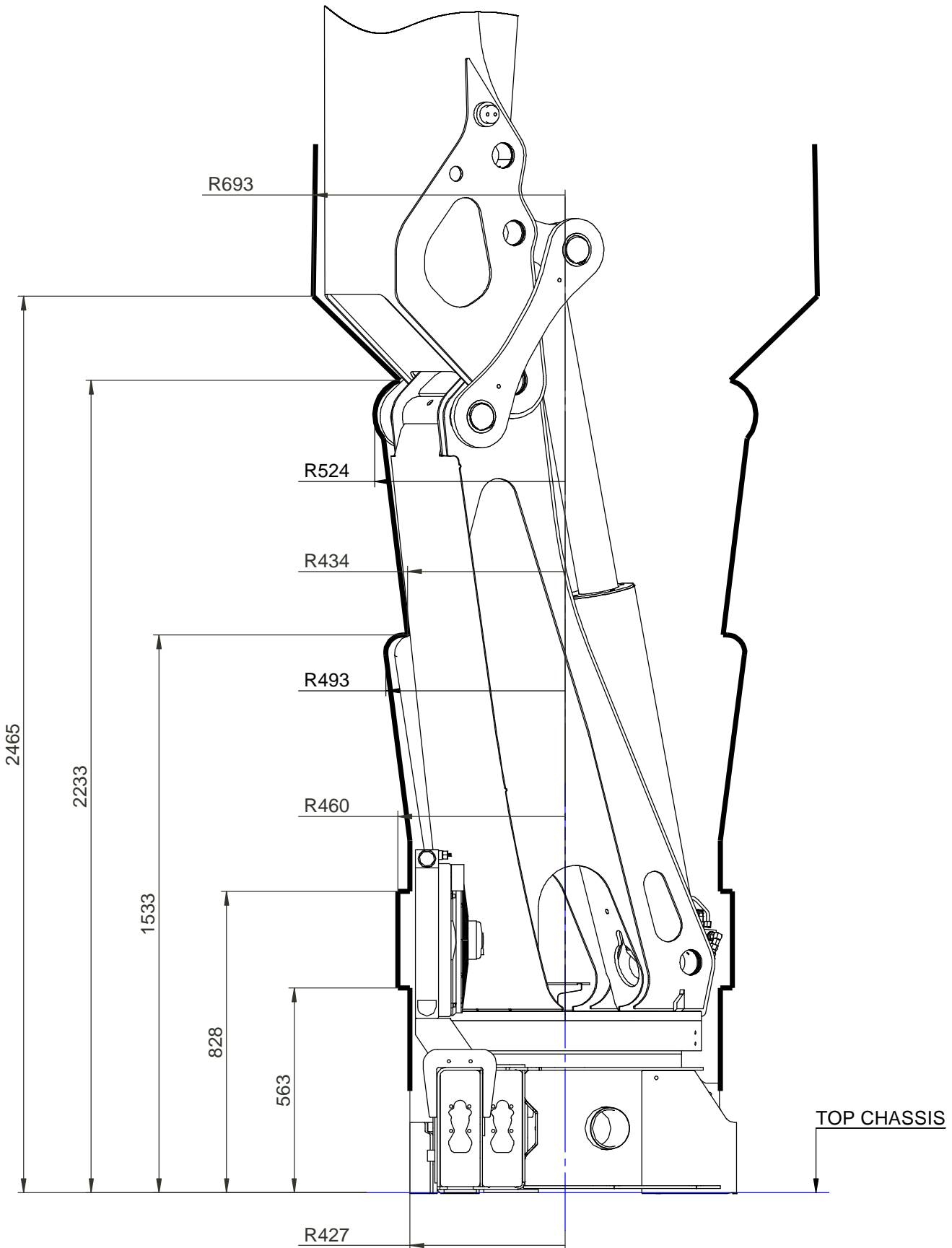
Dimension sketch K7-K8

Catalogue no.	Section
31 098	41
Date	Page
20-04-2012	1 (1)



Slewing radius

Catalogue no.	Section
31 098	42
Date	Page
09-07-2012	1 (1)



Lifting height at column

Catalogue no.

31 098

Section

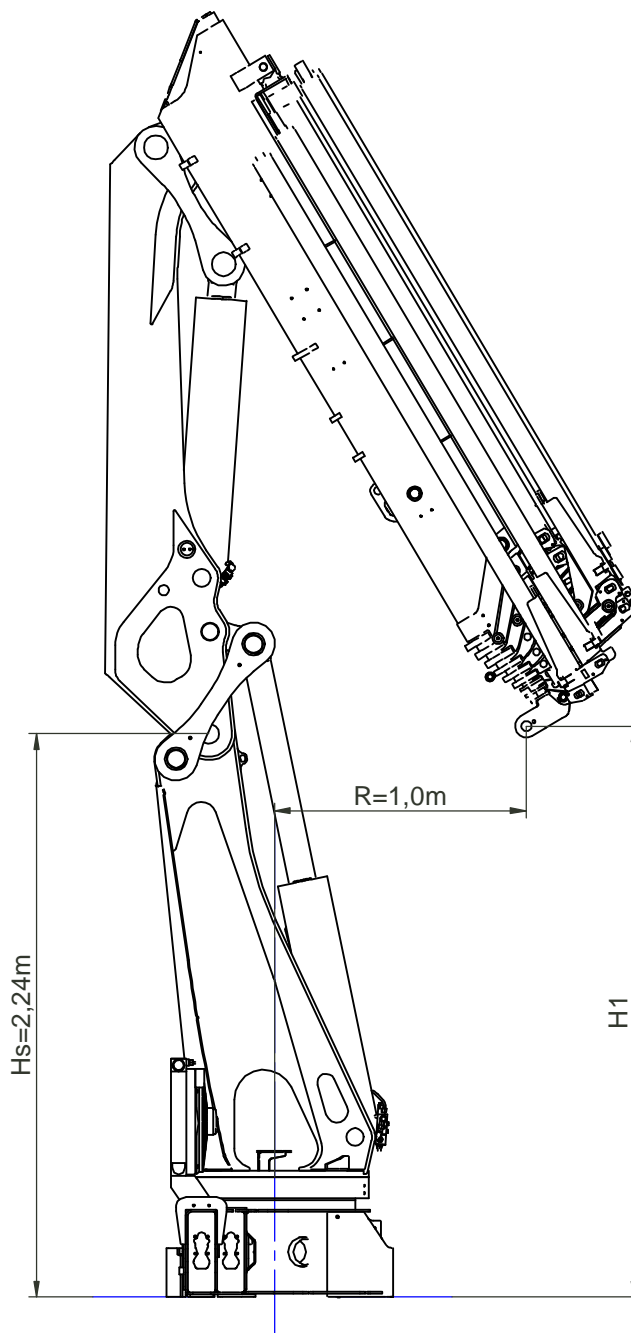
45

Date

12-07-2012

Page

1 (1)



	H1
K2	2,51m
K3	2,46m
K4	2,41m
K5	2,37m
K6	2,34m
K7	2,30m
K8	2,27m

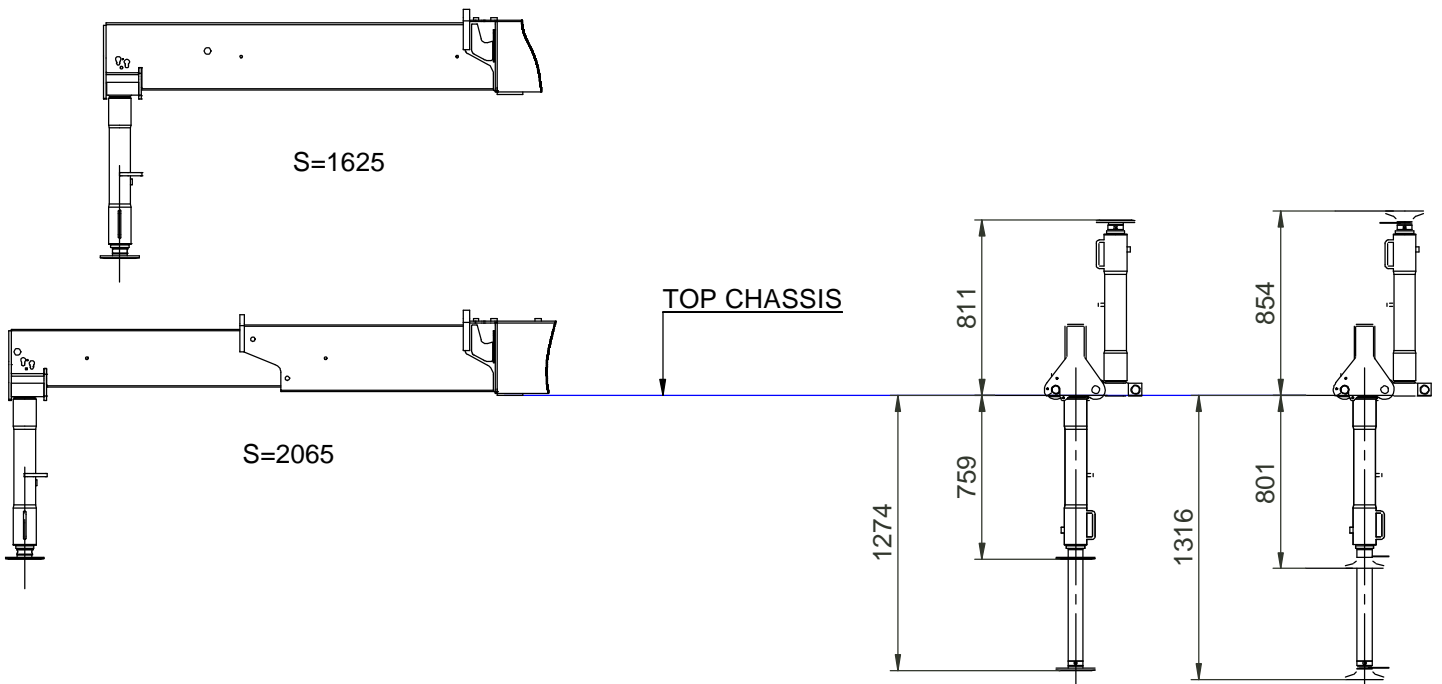
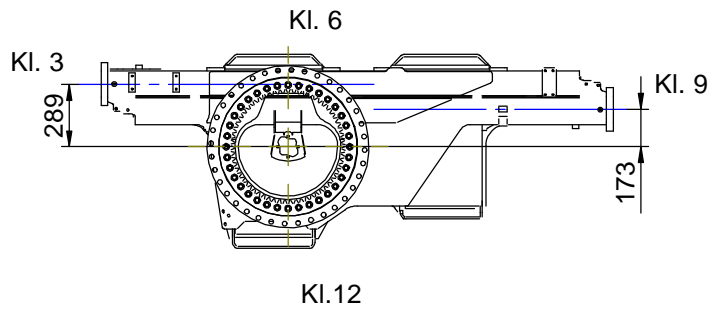
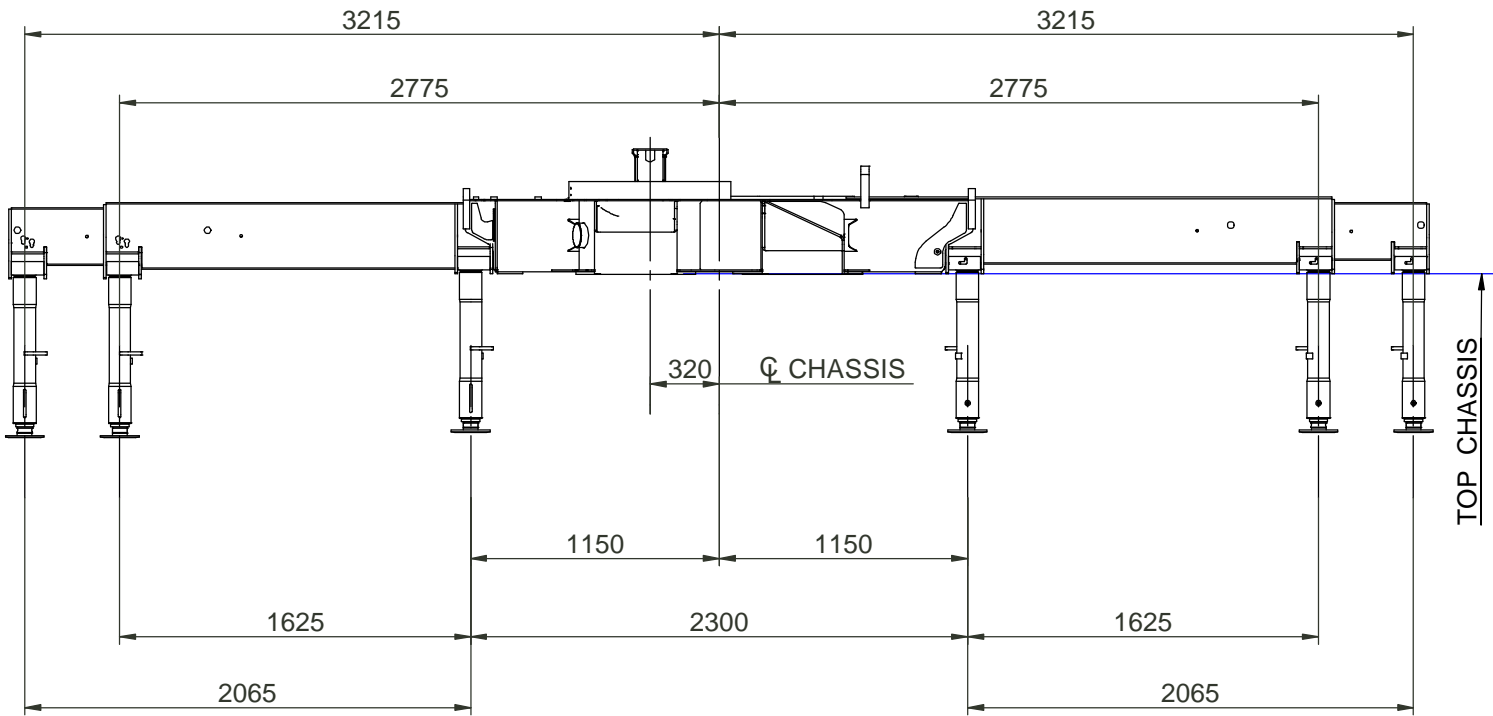


Technical Information 3220-K



Dimension sketch, stabilizer legs

Catalogue no.	Section
31 098	50
Date	Page
19-07-2012	1 (1)

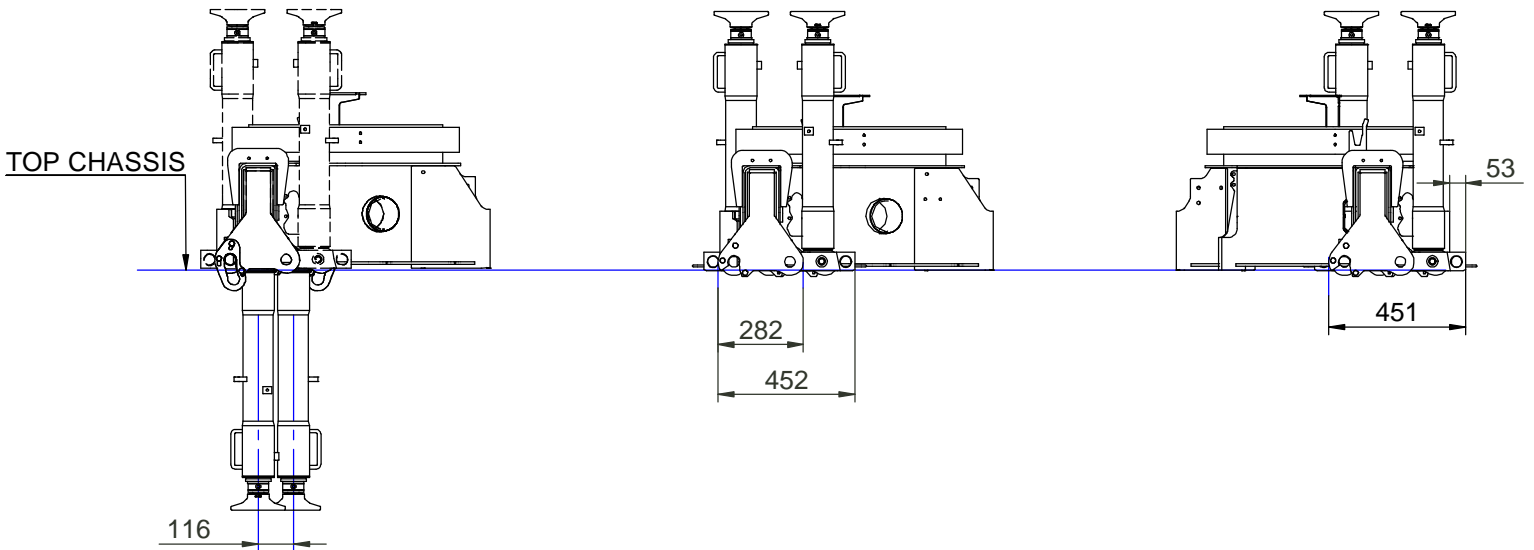
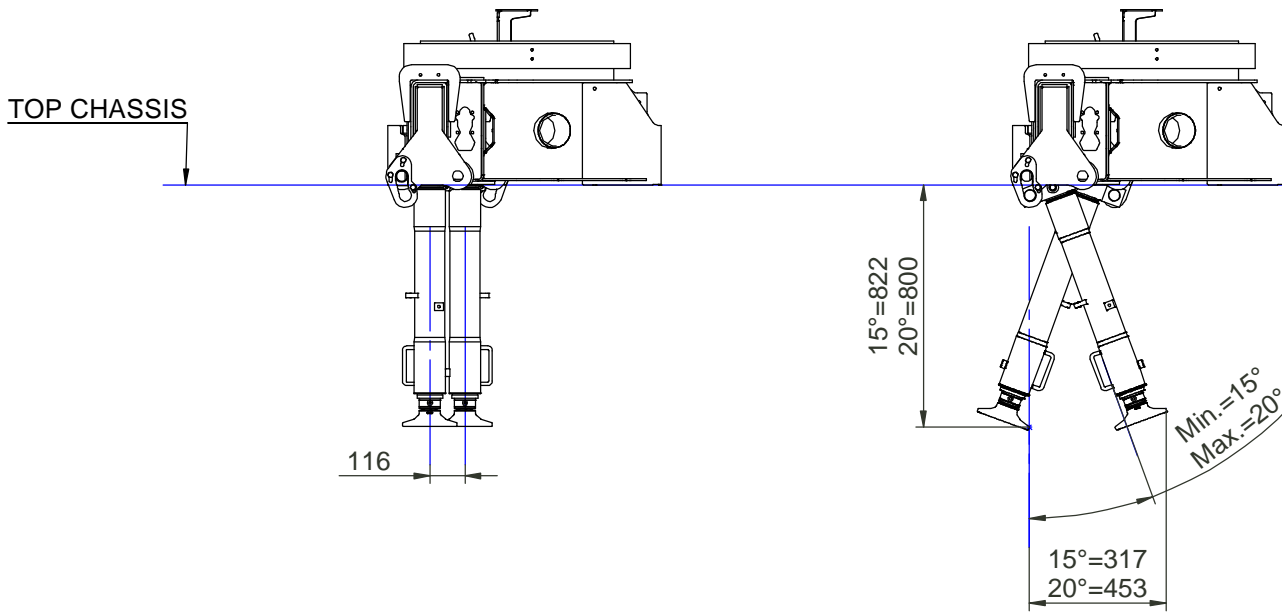
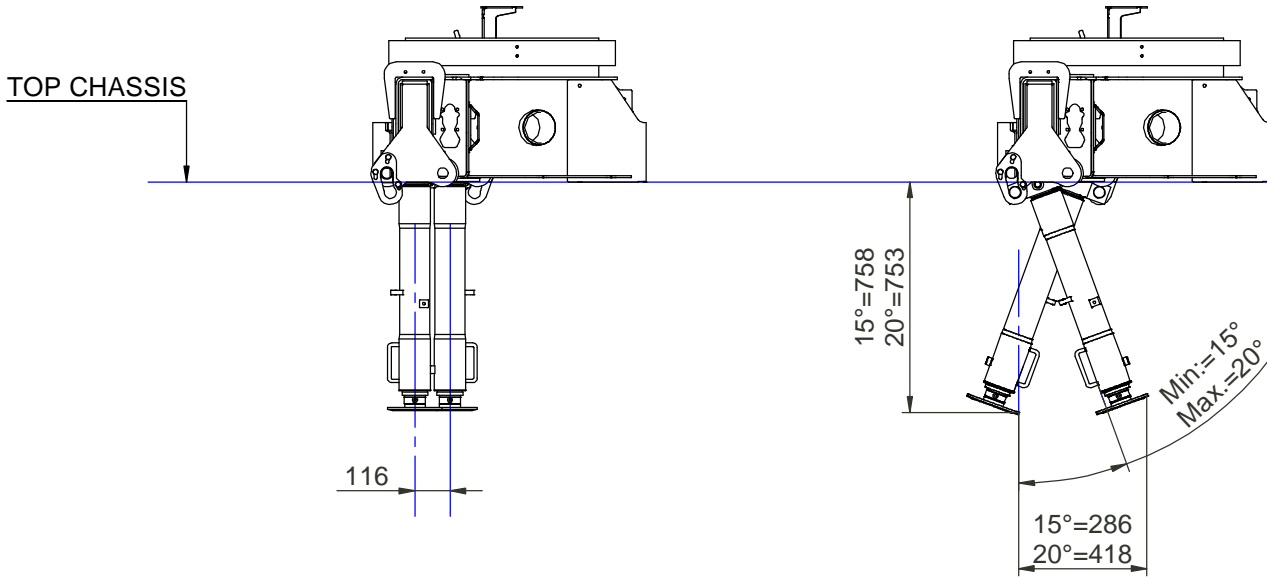


Technical Information 3220-K



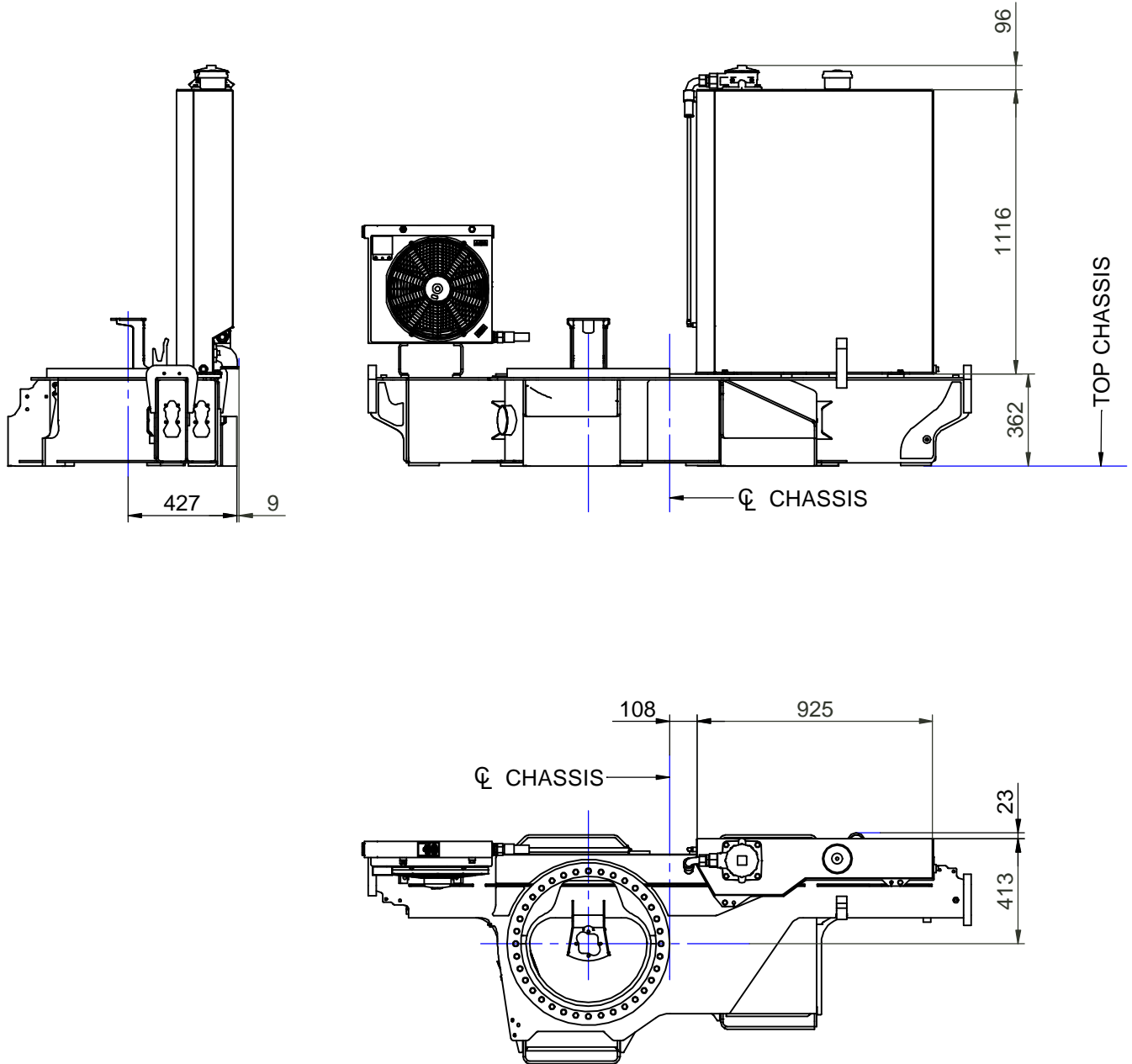
Dimension sketch, stabilizer cylinder

Catalogue no.	Section
31 098	51
Date	Page
03-12-2012	1 (1)



Dimension sketch, tank

Catalogue no.	Section
31 098	53
Date	Page
21-07-2012	1 (1)



Technical data, winch	Catalogue no. 31 098	Section 55
	Date 02-10-2012	Page 1 (1)

Performance (at 150 bar):	Unit	2,5T winch
Max. wire pull – 1st layer	kg	2500
Max. wire pull – 2nd layer	kg	2300
Max. wire pull – 3rd layer	kg	2100
Max. wire pull – 4th layer	kg	1950

Wire speed (at 40 l/min.):	Unit	2,5T winch
Max. wire speed – 1st layer	m/min	24
Max. wire speed – 2nd layer	m/min	26
Max. wire speed – 3rd layer	m/min	28
Max. wire speed – 4th layer	m/min	30

Weights:	Unit	2,5T winch
Tare weight, winch (CE)	kg	90
Fixed parts (valve section, brackets, hoses etc.)	kg	50
Wire Ø10 x 60 m	kg	30
Spare parts, single snatch block	kg	20
Spare parts, double snatch block	kg	40

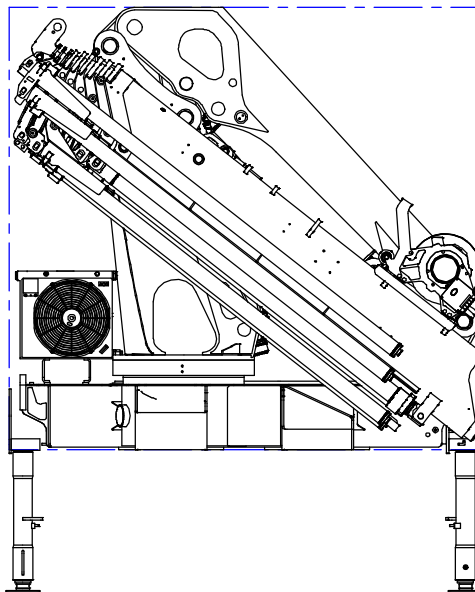
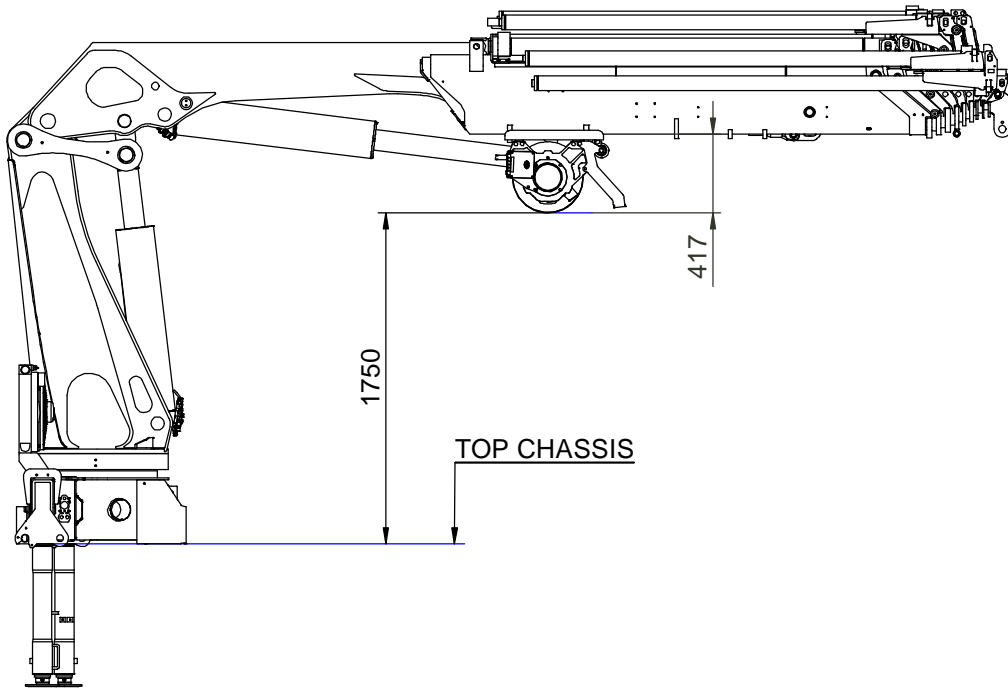


Technical Information 3220-K



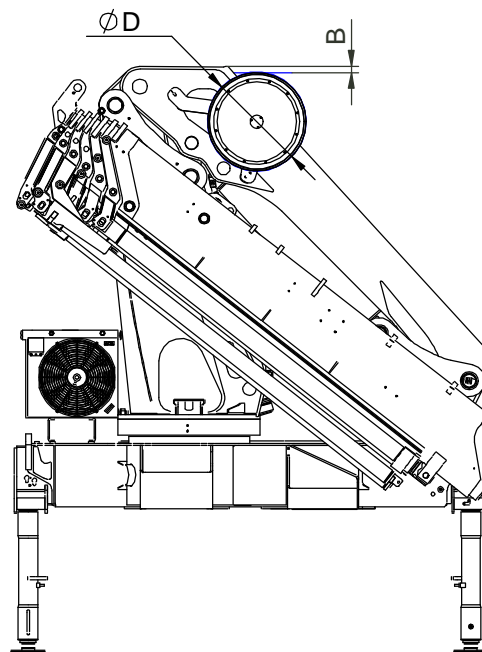
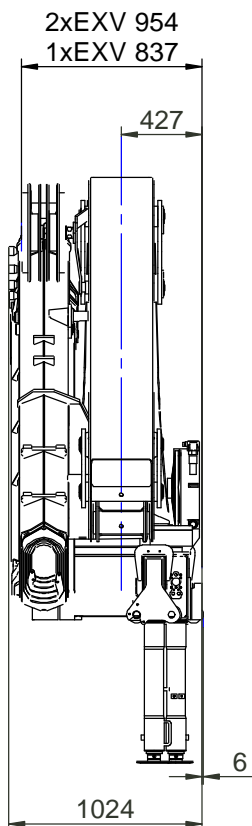
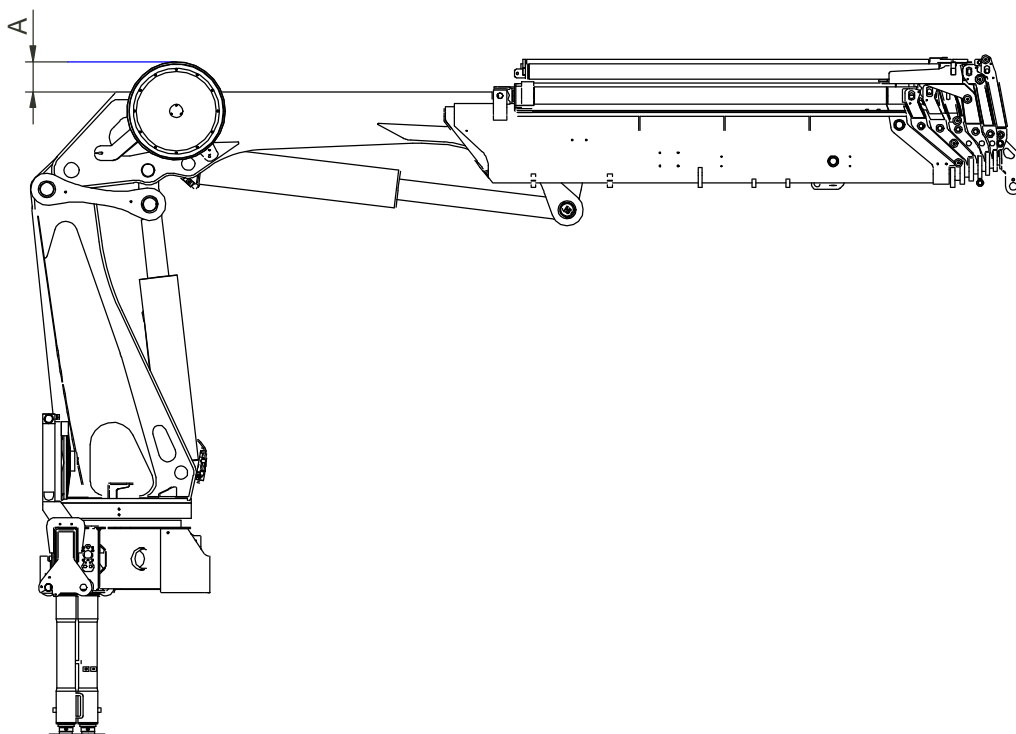
Dimension sketch winch, 2,5T

Catalogue no.	Section
31 098	56
Date	Page
10-04-2012	1 (1)



Dimension sketch, internal hose routing

Catalogue no.	Section
31 098	59
Date	Page
12-08-2012	1 (1)



	D (1EXV)	D (2EXV)	A (1EXV)	A (2EXV)	B (1EXV)	B (2EXV)
K2 - K3	525	520	160	158	28	43
K4 - K5	615	570	205	183	0	20
K6	615	615	205	198	0	0

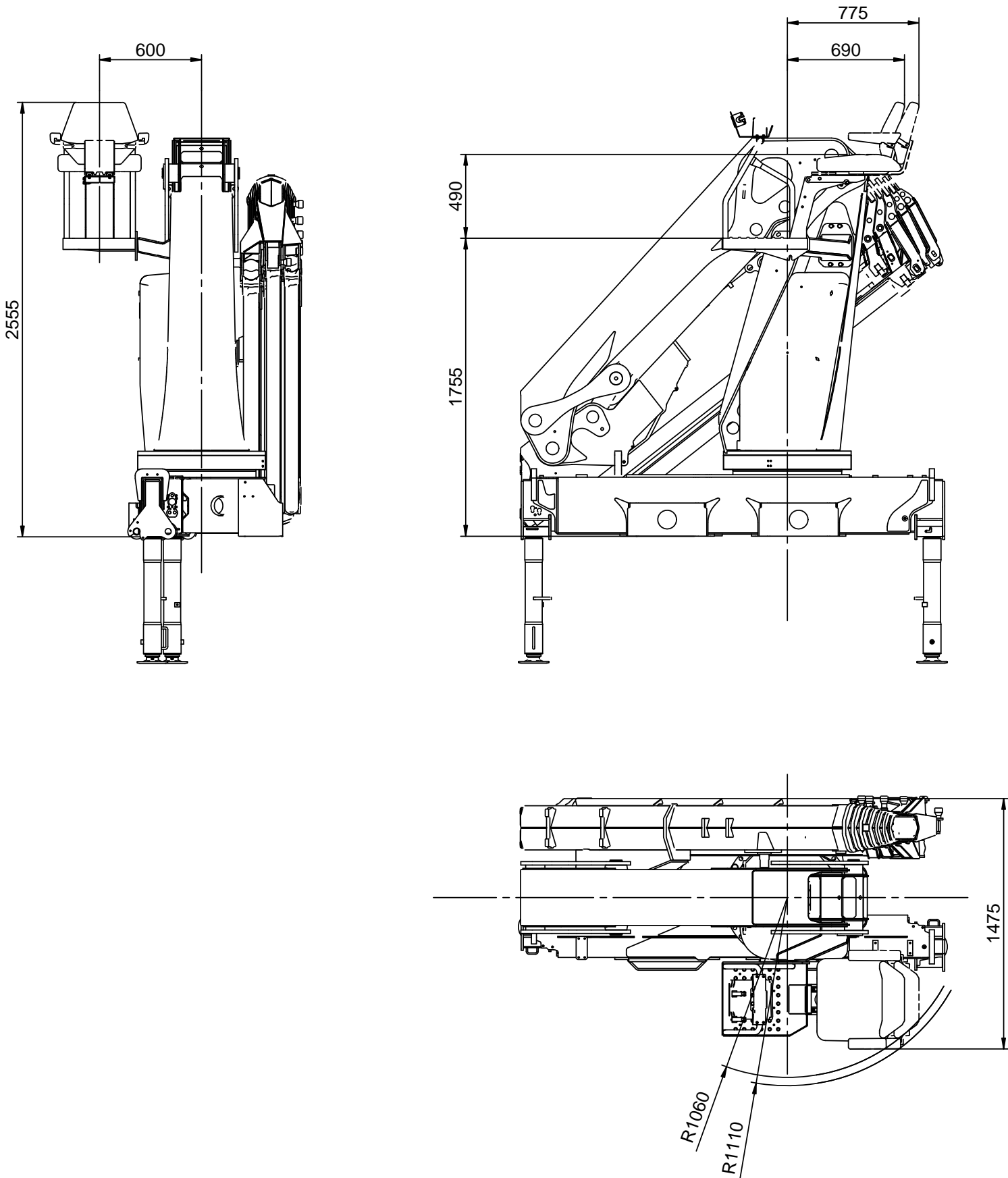


Technical Information 3220-K



Dimension sketch, TS-RC

Catalogue no.	Section
31 098	61
Date	Page
22-01-2013	1 (1)

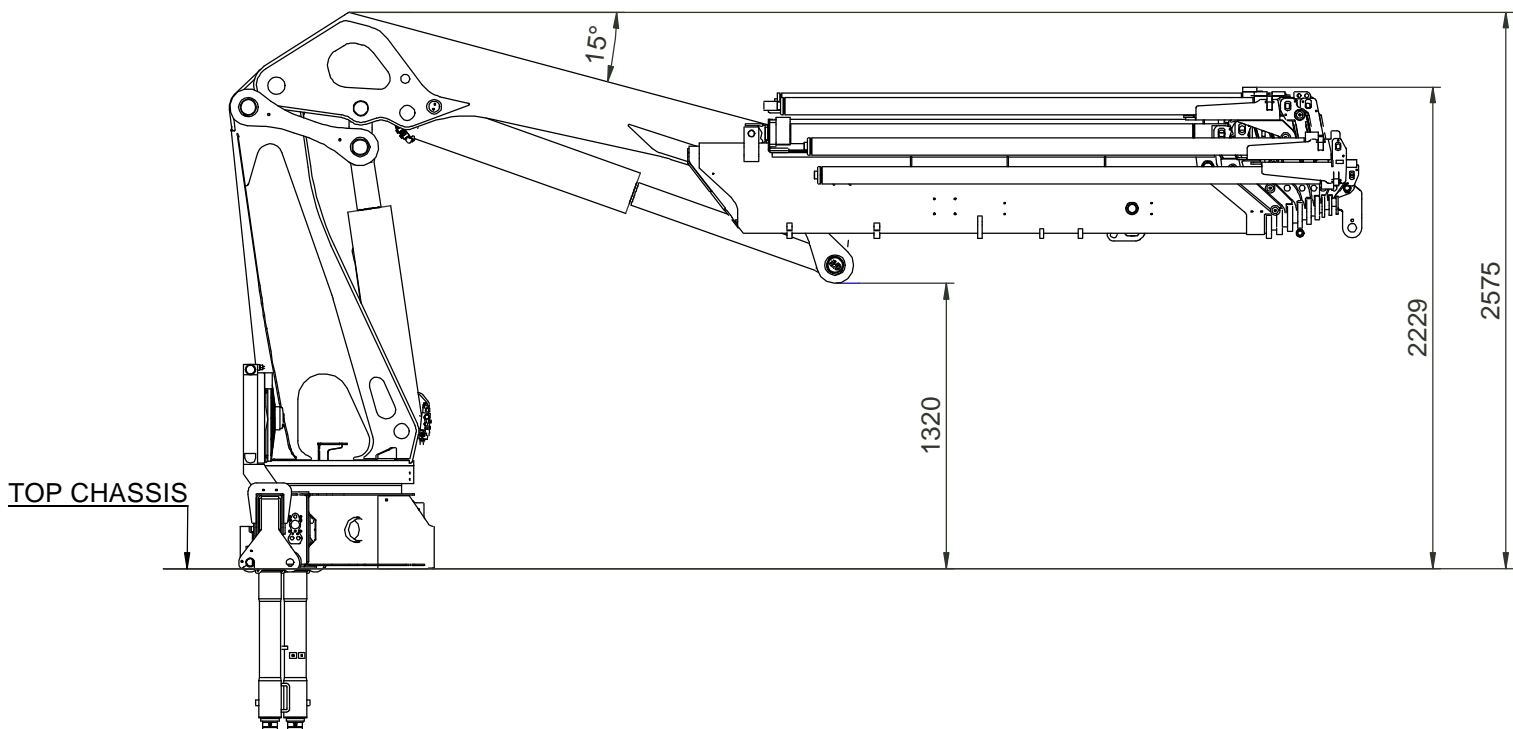
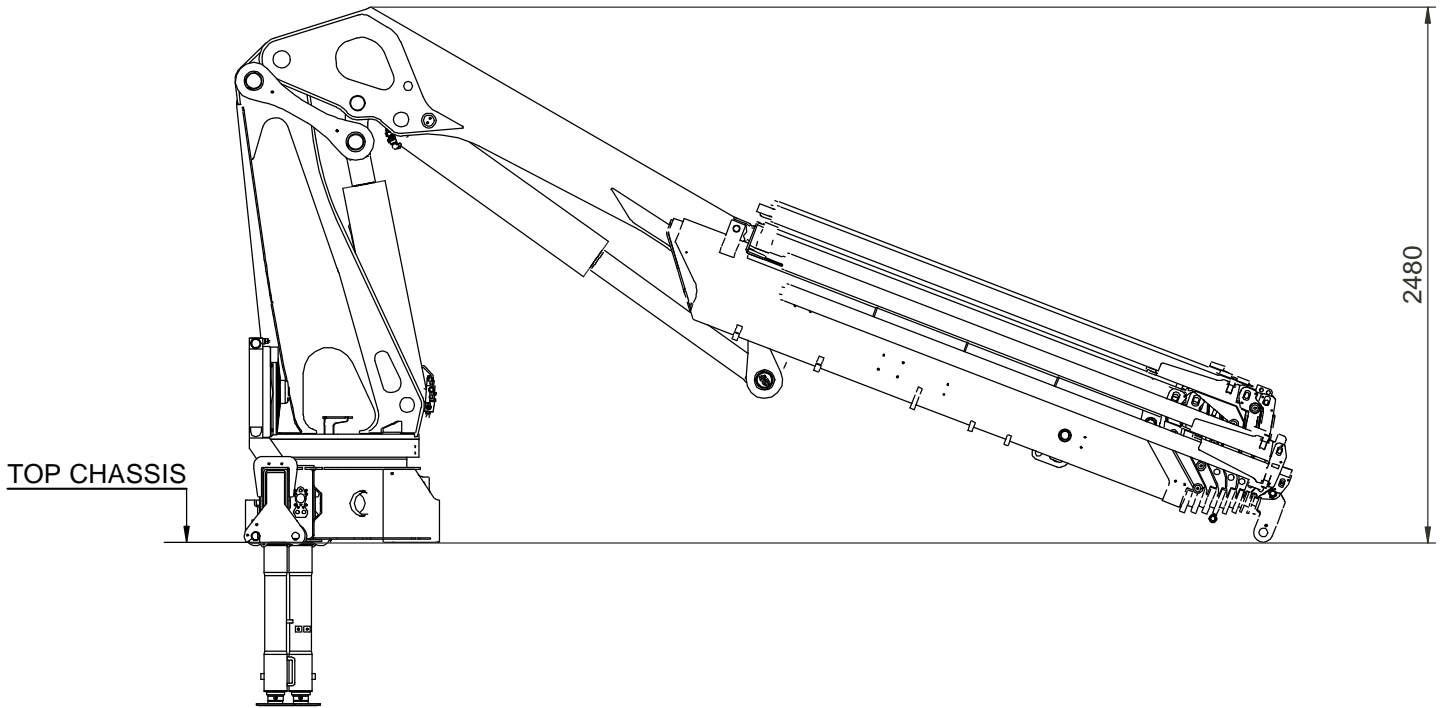


Technical Information 3220-K



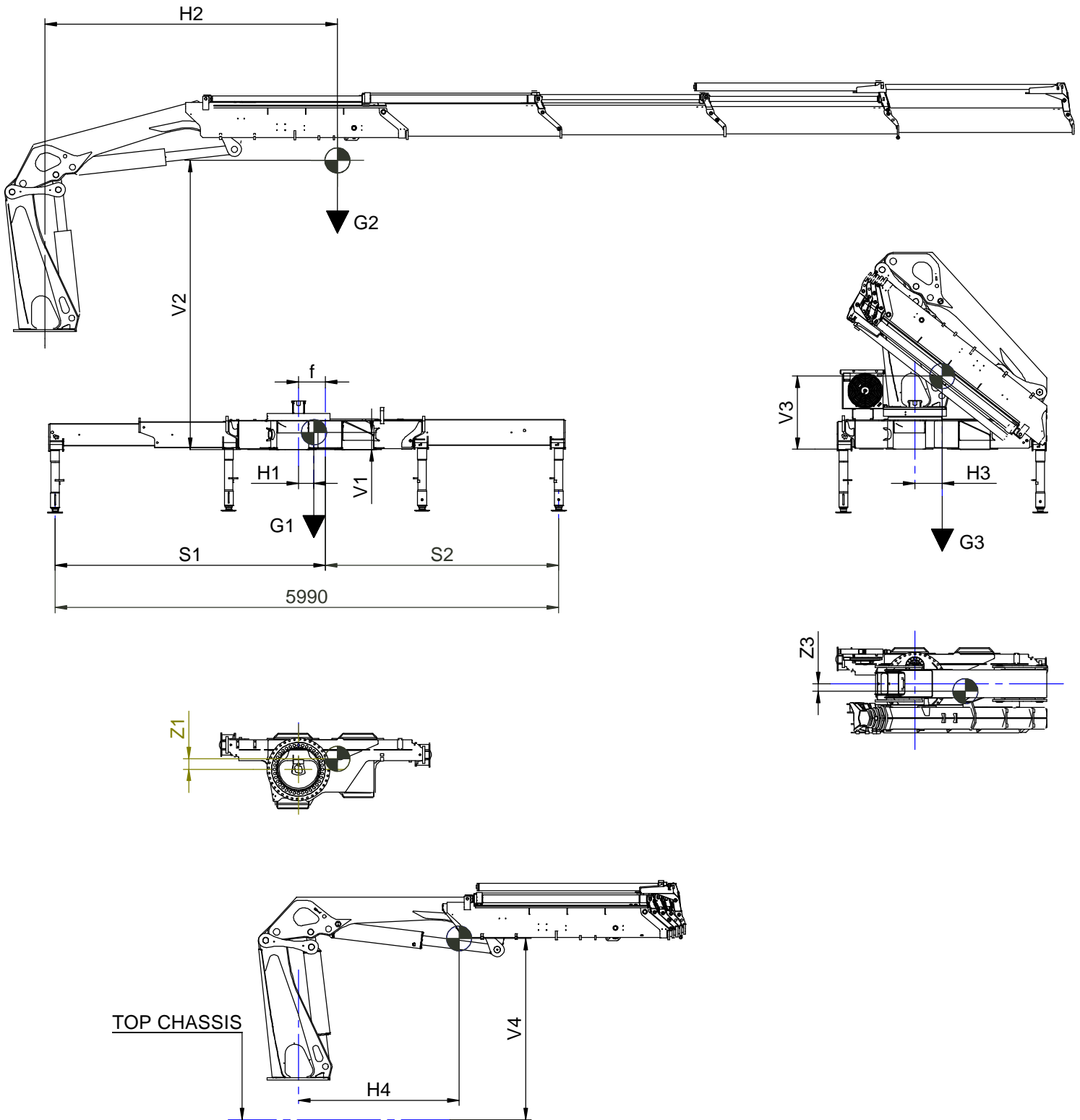
Stowed in truck body

Catalogue no.	Section
31 098	65
Date	Page
16-07-2012	1 (1)



Centres of gravity

Catalogue no.	Section
31 098	75
Date	Page
22-11-2012	1 (2)





Centres of gravity

Catalogue no.	Section
31 098	75
Date	Page
22-11-2012	2 (2)

3220

KI. 3: S=2065 - KI. 9: S=1625

	S	S1	S2	H1	V1	Z1	G1	f	H2	V2	G2	H3	V3	Z3	G3	H4	V4
K2	5990	3215	2775	185	205	125	1105	320	2120	2400	1890	335	825	50	2995	1680	2080
K3	5990	3215	2775	185	205	125	1105	320	2760	2460	2090	335	845	75	3195	1760	2120
K4	5990	3215	2775	185	205	125	1105	320	3480	2510	2290	325	870	90	3395	1910	2160
K5	5990	3215	2775	185	205	125	1105	320	4130	2550	2460	320	875	105	3565	2020	2180
K6	5990	3215	2775	185	205	125	1105	320	4805	2580	2620	315	885	120	3725	2120	2200
K7	5990	3215	2775	185	205	125	1105	320	5440	2600	2770	305	900	135	3875	2180	2210
K8	5990	3215	2775	185	205	125	1105	320	6050	2615	2890	295	920	140	3995	2240	2220
K6 + FJ600K3	5990	3215	2775	185	205	125	1105	320	7070	2615	3280	295	1020	145	4385	2750	2220
K6+ FJ600K4	5990	3215	2775	185	205	125	1105	320	7420	2630	3335	300	1030	150	4440	2830	2220
K5 + FJ1000K4	5990	3215	2775	185	205	125	1105	320	7010	2580	3355	305	1070	155	4460	2920	2200
K5+ FJ1000K5	5990	3215	2775	185	205	125	1105	320	7330	2590	3425	310	1080	160	4530	2990	2205

S1: KL.3 - S2: KL.9

	S	S1	S2	H1	V1	Z1	G1
3220K	6430	3215	3215	300	185	135	1150
	5550	2775	2775	230	195	125	1060

Technical Data, 3220-K with Fly-jib

Catalogue no.	Section
31 098	250
Date	Page
26-10-2012	1(1)

Performance

		3220-K5 FJ1000-K4	3220-K5 FJ1000-K5	3220-K6 FJ600-K3	3220-K6 FJ600-K4
Hydraulic reach	m	24,30	26,29	25,13	27,15
Hydraulic telescopic movement, Fly-jib	mm	6745	8730	5450	7400
Out-reach with manual extensions	m	26,29	-	28,94	29,00
Lifting capacity, hydraulic	kg-m	750 - 17,4	685 - 17,5	660 - 19,6	605 - 19,7
		660 - 19,0	600 - 19,1	585 - 21,3	530 - 21,4
		590 - 20,6	530 - 20,7	530 - 23,2	475 - 23,2
		530 - 22,4	470 - 22,5	485 - 25,1	430 - 25,1
		480 - 24,2	420 - 24,3	-	345 - 27,1
		-	345 - 26,2	-	-
Lifting capacity, manual extensions	kg-m	365 - 26,2	-	355 - 27,0	275 - 28,9
		-	-	295 - 28,9	-

Dimensions

Height above chassis - with winch	mm	2678	2678	2719	2719
Height above chassis - excl. winch		2668	2668	2698	2698
Width	mm	2500	2500	2500	2500
Length, without extra valve kit on fly-jib	mm	1172	1172	1138	1138
Length, with extra valve kit on fly-jib	mm	1172	1172	1138	1138

Weights

Fly-Jib 1)	kg	750	820	470	530
Manual extensions	kg	35	-	30	20
	kg		-	30	-
1 extra valve (hose reels)	kg	45	45	45	45
2 extra valves (hose reels)	kg	90	90	90	90

1) Weights ± 5% because of tolerances for plate thickness

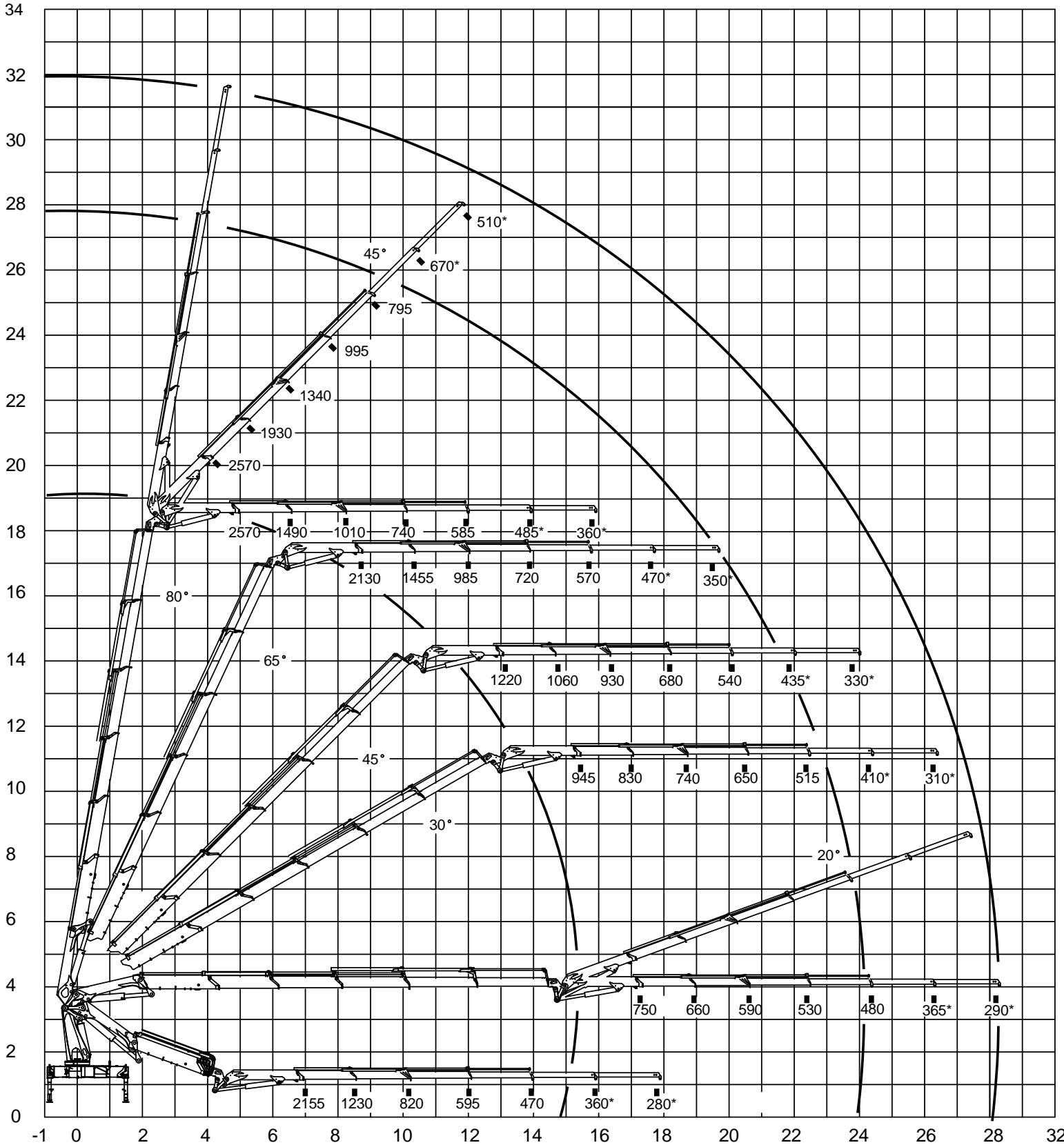


Technical Information 3220-K



Lifting capacity diagram, 3220-K5 with FJ1000 K4

Catalogue no.	Section
31 098	253
Date	Page
24-09-2012	1 (1)



* Med manuel forlænger

- power to lift. -

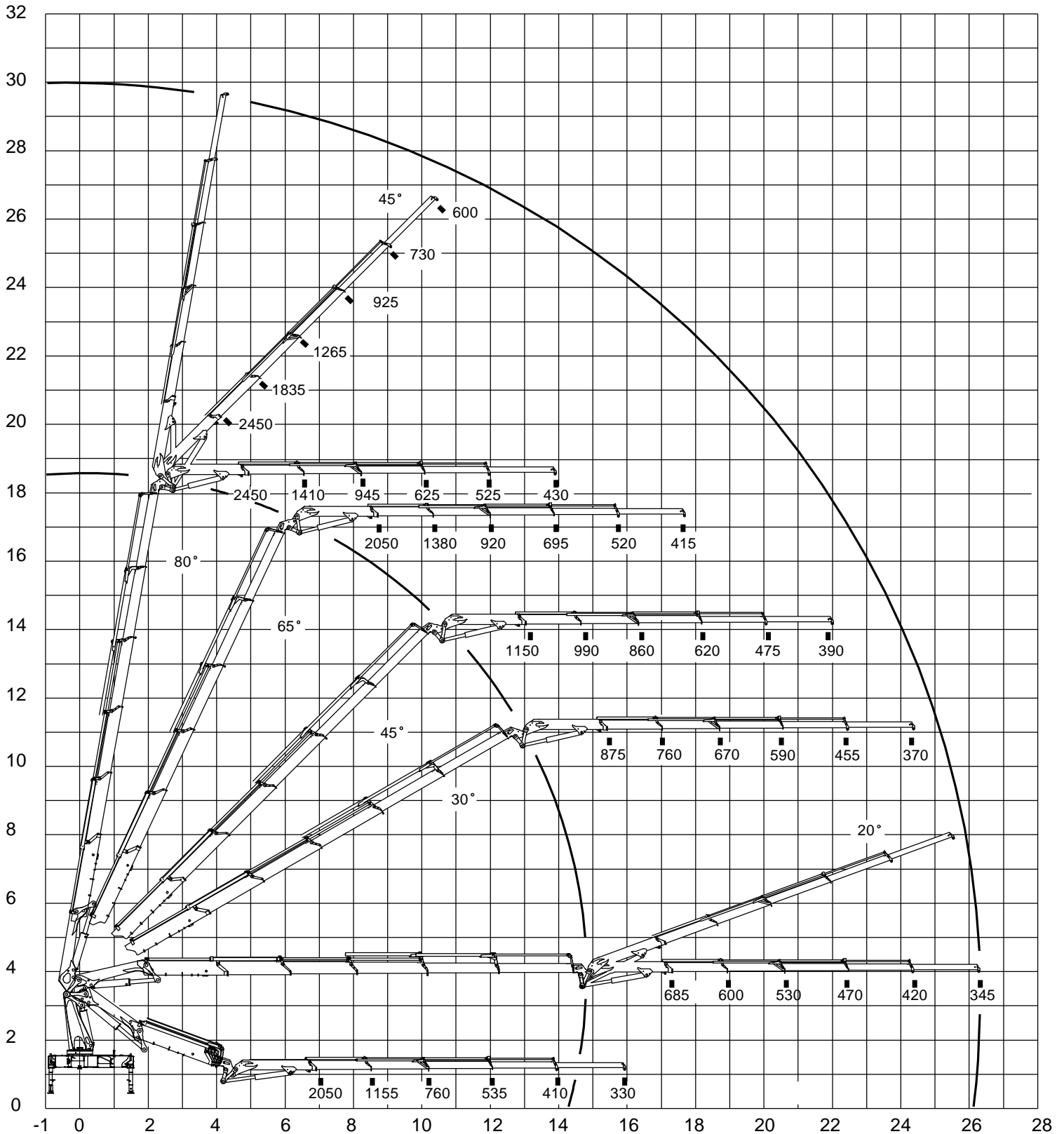


Technical Information 3220-K



Lifting capacity diagram, 3220-K5 with FJ1000 K5

Catalogue no.	Section
31 098	254
Date	Page
27-09-2012	1 (1)



- power to lift. -

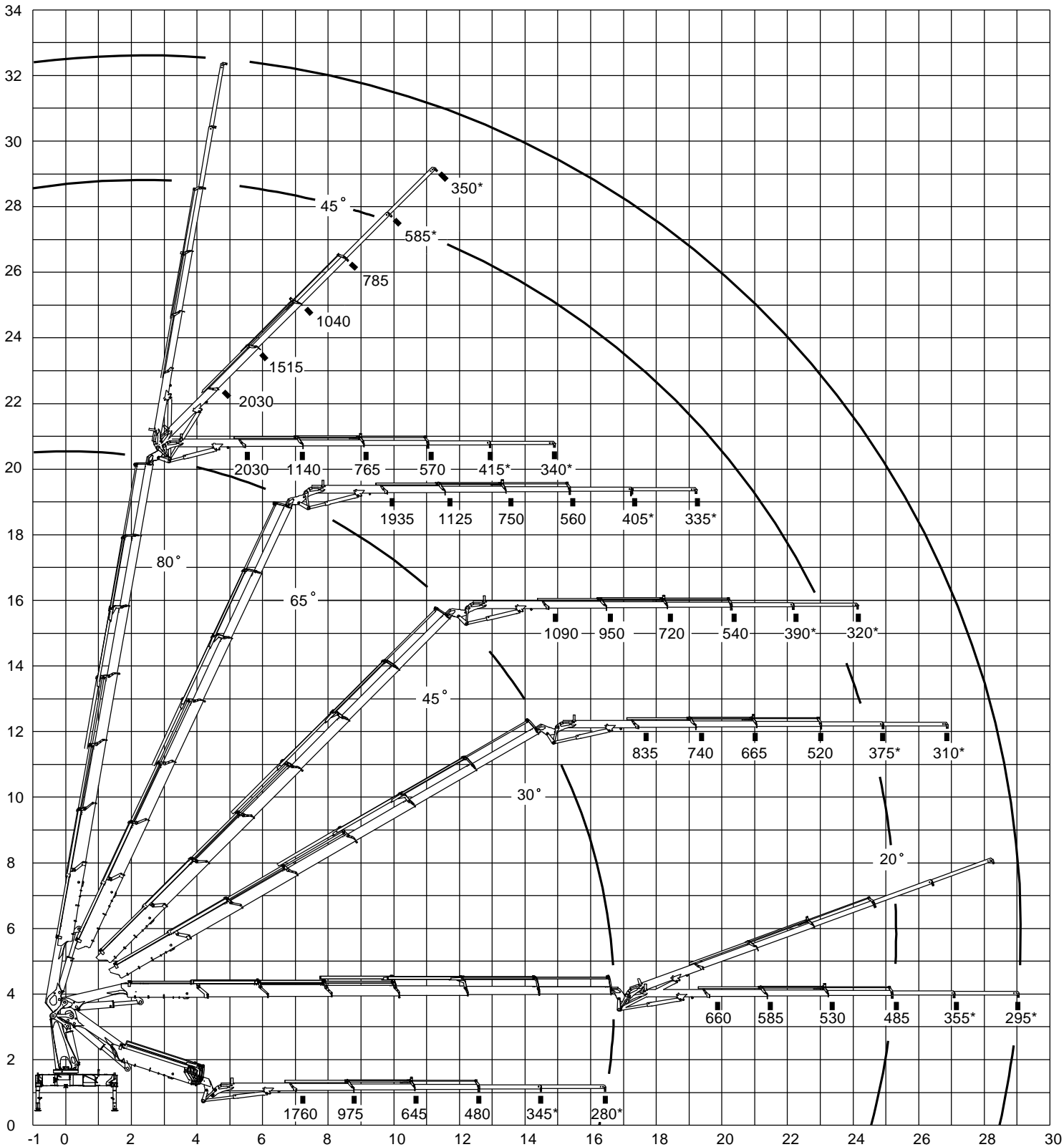


Technical Information 3220-K



Lifting capacity diagram, 3220-K6 with FJ600 K3

Catalogue no.	Section
31 098	255
Date	Page
01-10-2012	1 (1)



* Med manuel forlænger

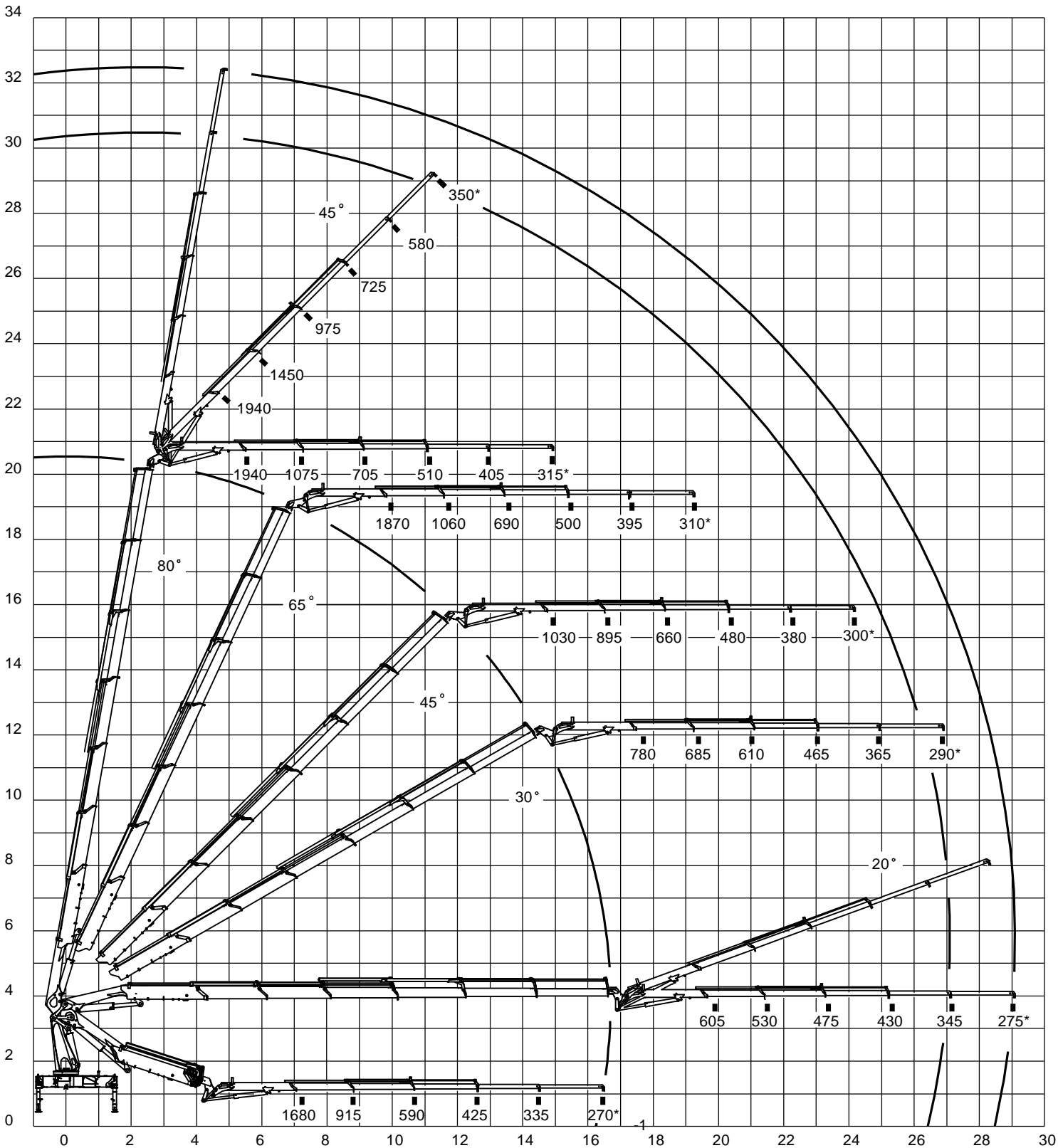


Technical Information 3220-K



Lifting capacity diagram, 3220-K6 with FJ600 K4

Catalogue no.	Section
31 098	256
Date	Page
02-10-2012	1 (1)



* Med manuel forlænger

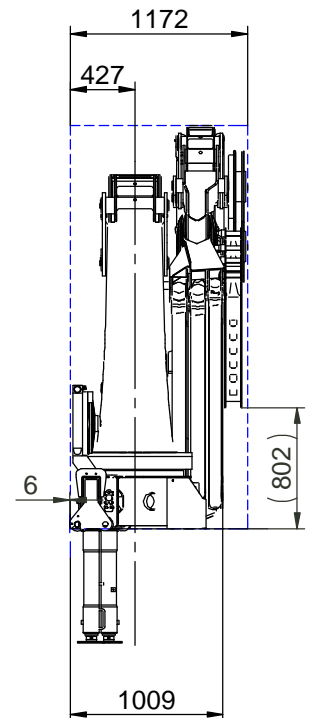
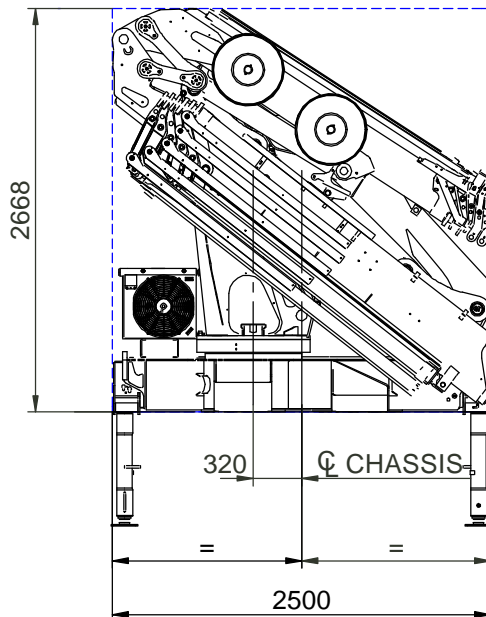
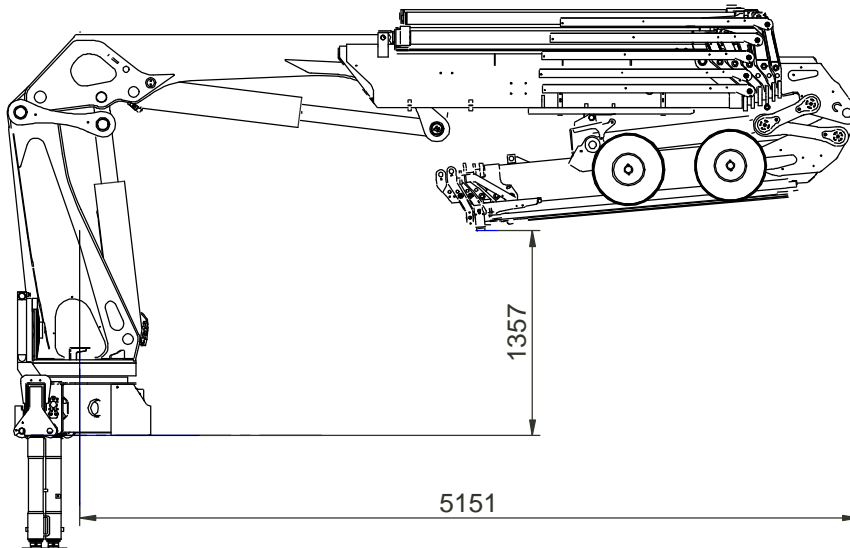
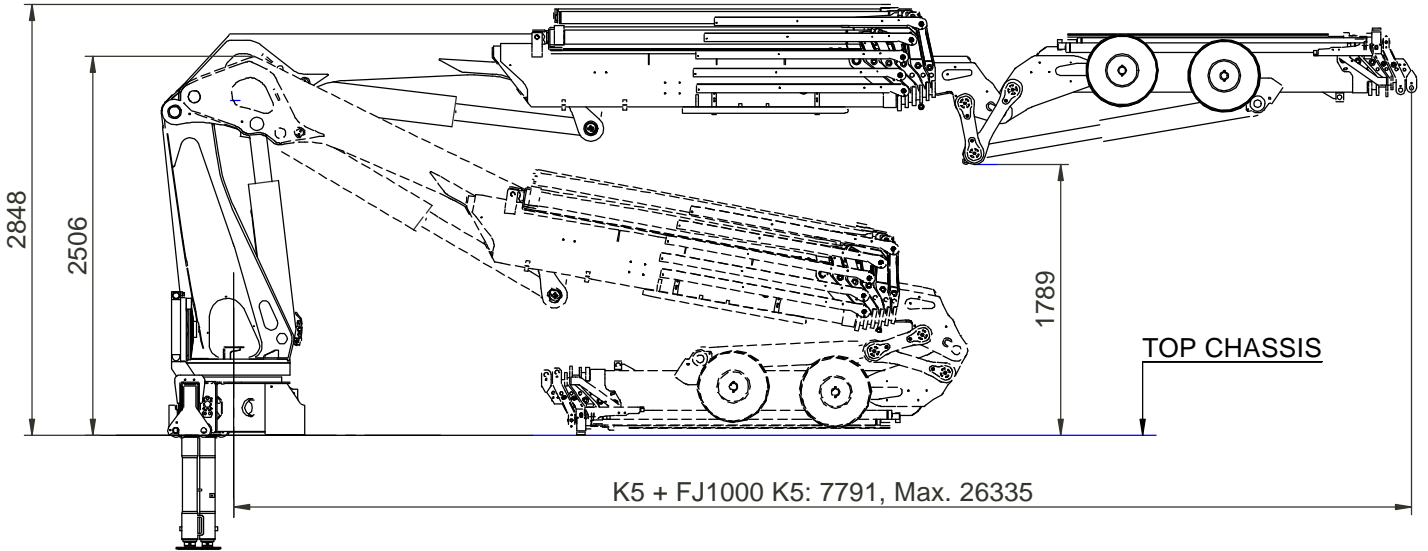


Technical Information 3220-K



Dimension sketch, 3220-K5 with FJ1000

Catalogue no.	Section
31 098	265
Date	Page
09-10-2012	1 (2)

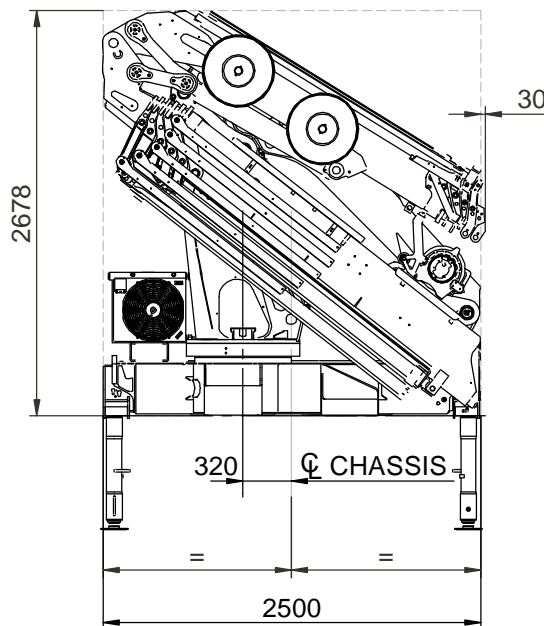
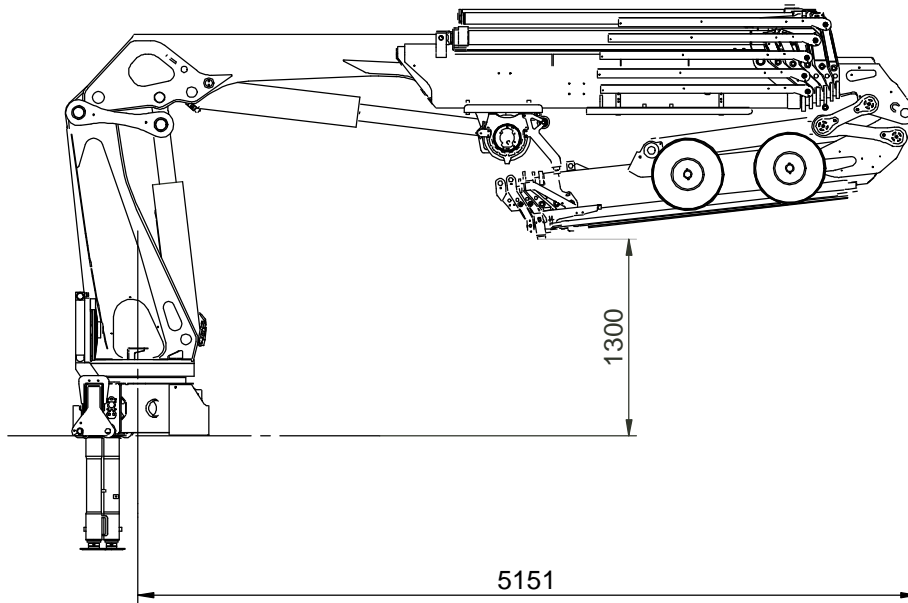


Technical Information 3220-K



Dimension sketch, 3220-K5 with FJ1000

Catalogue no.	Section
31 098	265
Date	Page
09-10-2012	2 (2)

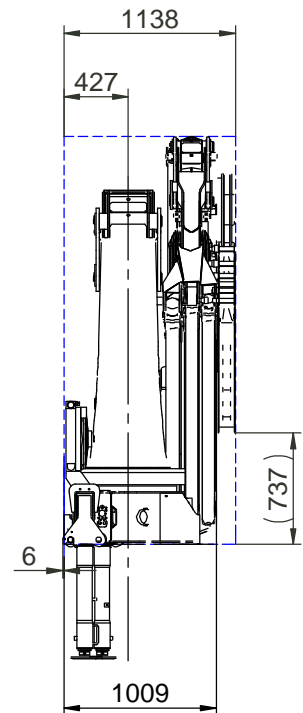
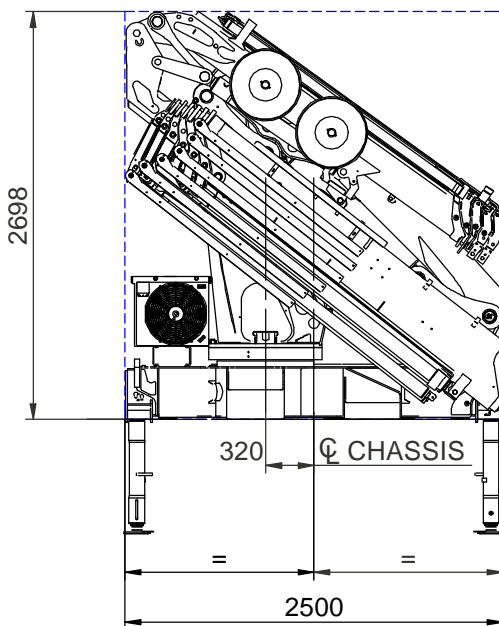
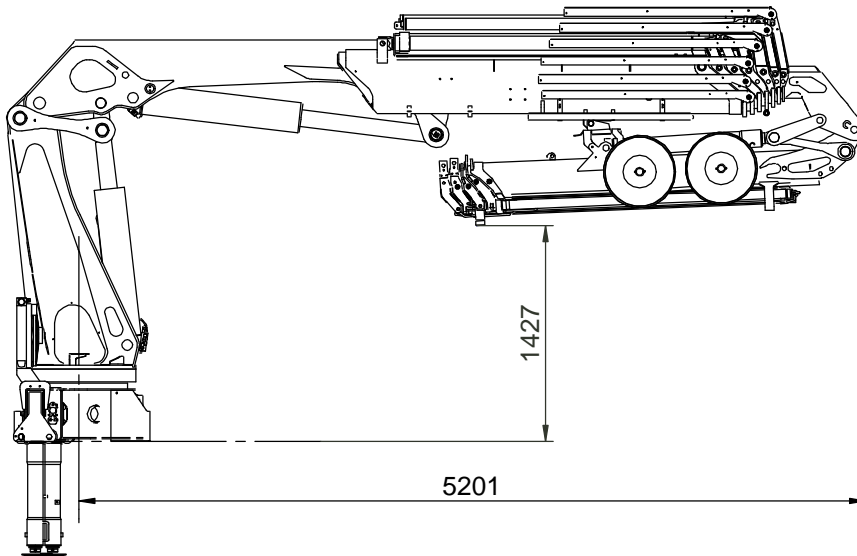
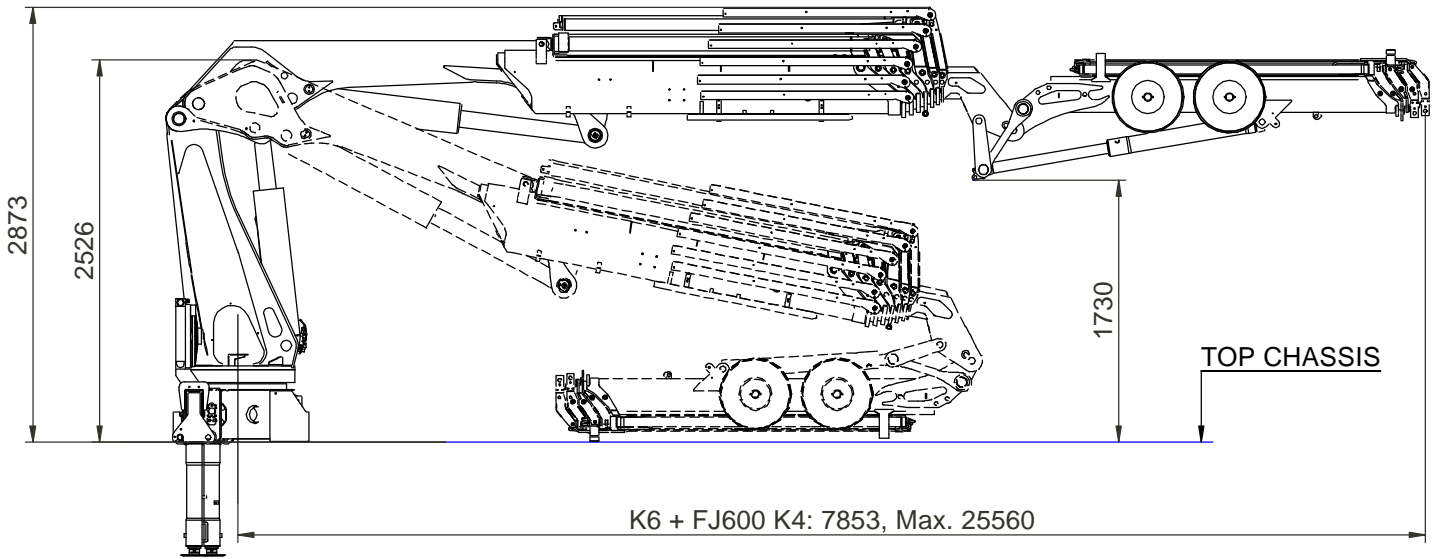


Technical Information 3220-K



Dimension sketch, 3220-K6 with FJ600

Catalogue no.	Section
31 098	266
Date	Page
18-10-2012	1 (2)

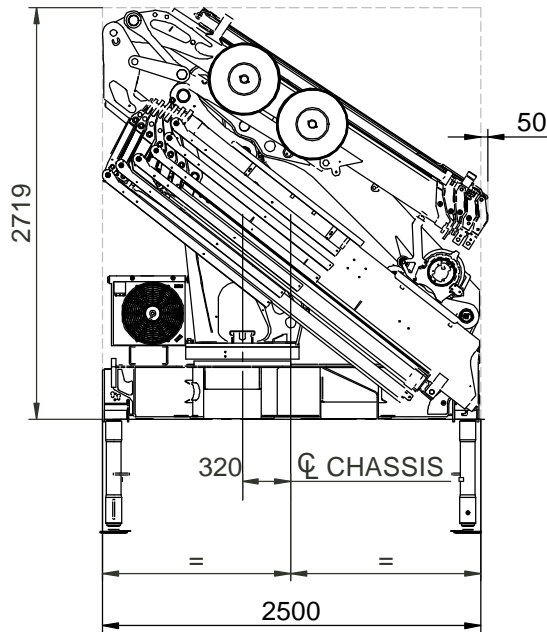
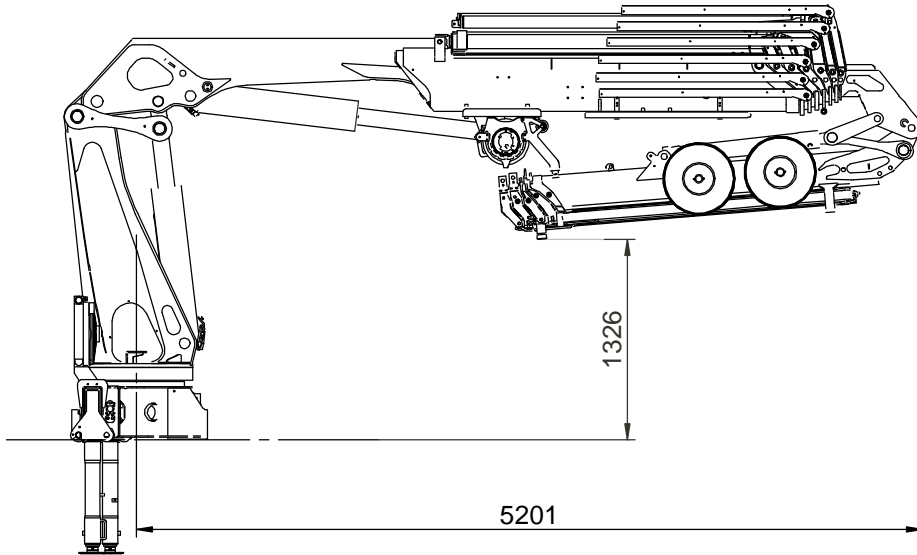


Technical Information 3220-K



Dimension sketch, 3220-K6 with FJ600

Catalogue no.	Section
31 098	266
Date	Page
18-10-2012	2 (2)



Technical Information 3220-K



Lifting capacity, Fly-jib with winch

Catalogue no.	31 098	Section	275
Date	03-04-2013	Page	1 (1)

Winch	1000 kg	1500 kg	2500 kg	3200 kg
	Dinamic P6E	Dinamic P9E	Dinamic P15E	Dinamic S25 / Brevini 2500
FJ350		800 kg		
FJ600		800 kg	800 kg	
FJ1000			800 kg	
FJ1200				1500 kg
FJ2000				1500 kg